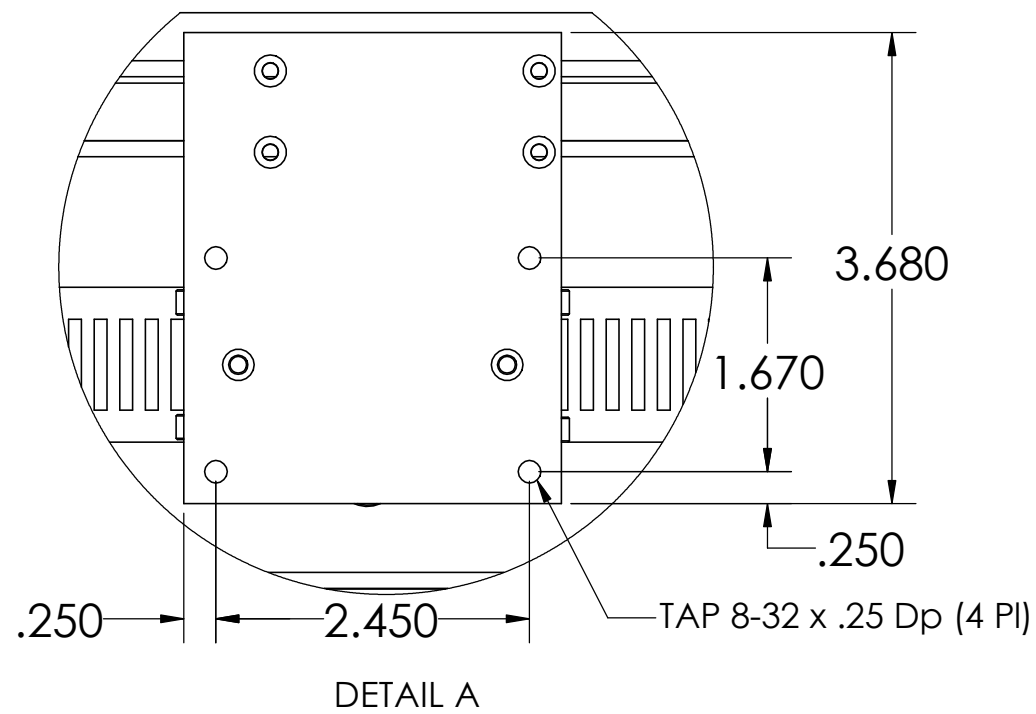
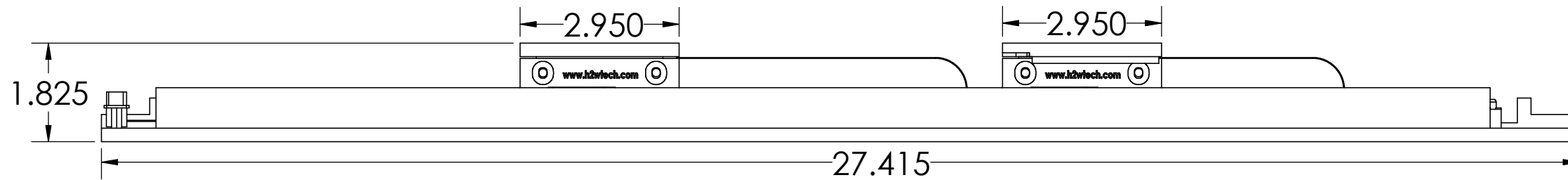
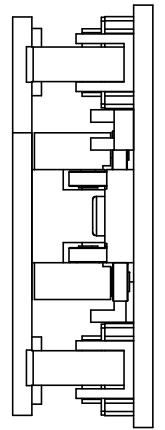
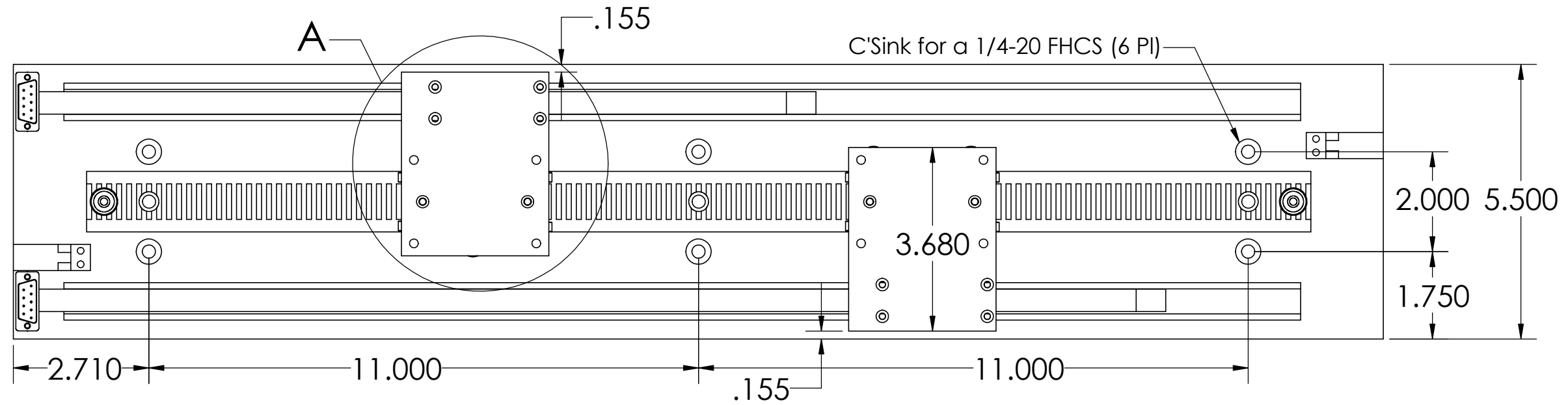


These drawings and specifications are the property of H2W Technologies, Inc. They are issued in confidence and shall not be reproduced, copied, or used without written permission from H2W Technologies, Inc.

REVISION TABLE						
REV	ECN#	DESCRIPTION	REV BY	APPROVED	DATE	
---	---	Original Drawing	OOG	MPW	6-14-04	



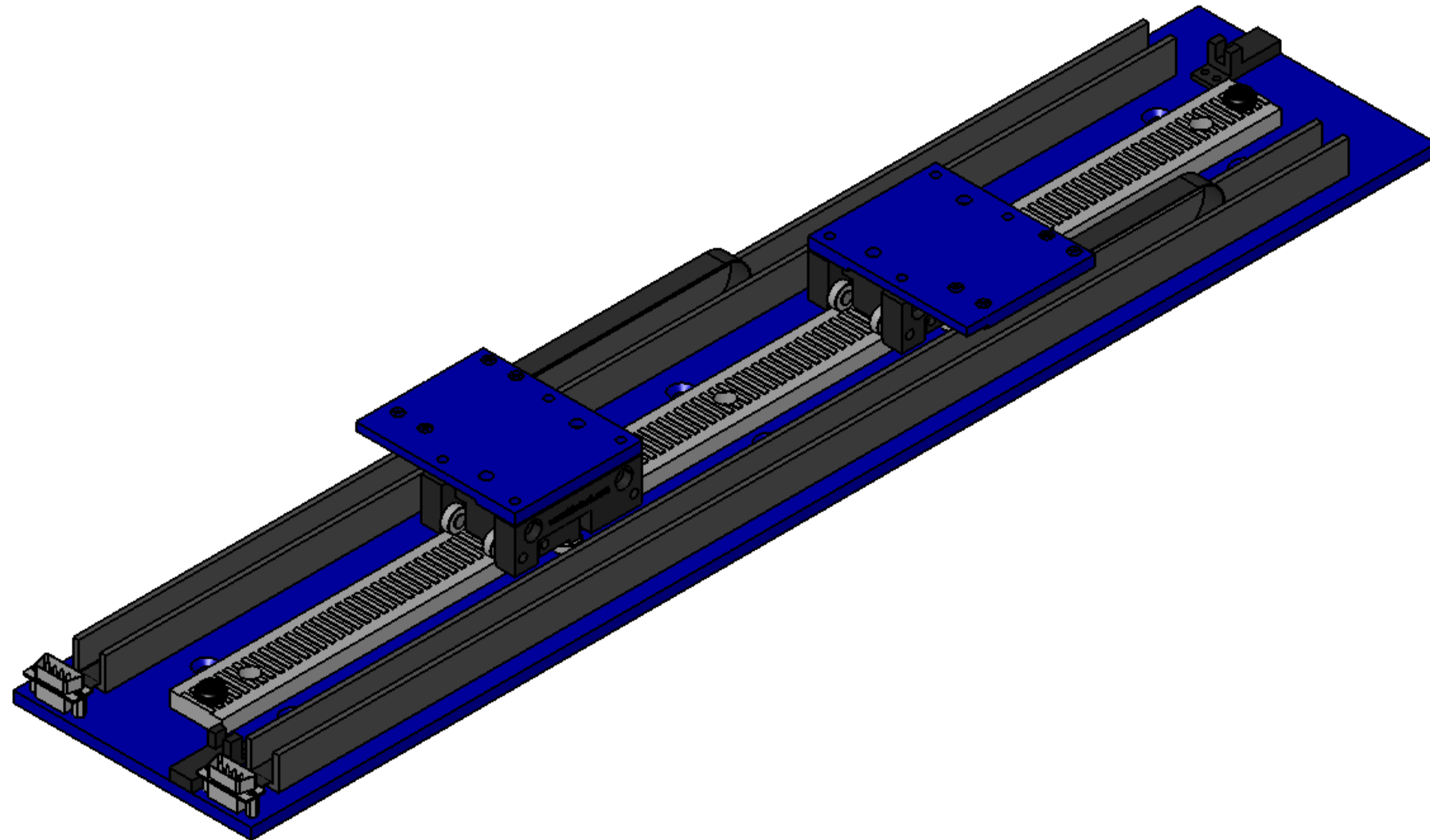
UNLESS SPECIFIED OTHERWISE:  
 All dimensions are in inches  
 Standard Tolerances are as follows  
 .XXX ±.005 ANGLES ±1°  
 .XX ±.010 FILLETS AND  
 .X ±.020 CORNERS .010  
 Remove All Burrs and Sharp Edges

MATERIAL		DATE		APPROVED	
FINISH		OOG	6-14-04	MPW	6-14-04

**H2W Technologies, Inc.**  
 26470 Ruether Ave #102 Santa Clarita, CA 91350 USA  
 Tel: (661) 251-2081 Fax: (661) 251-2067  
 www.h2wtech.com

TITLE			DWG #			REV			SHEET		
Linear Stepper Positioning Stage Model #: LSS-018-06-020-2X			10-0596			---			1 of 2		

These drawings and specifications are the property of H2W Technologies, Inc. They are issued in confidence and shall not be reproduced, copied, or used without written permission from H2W Technologies, Inc.



<b>LINEAR STEPPER STAGE SPECIFICATIONS</b>		
Motor P/N	STS-0213-R	
Continuous Force	2.30 lbs	10.22 N
Stroke	18 in	457 mm
Encoder Resolution	NONE	
Rated Current	1.0 Amp	
Resistance/Phase @ 20C	0.85 ohms	
Inductance/Phase @ 20C	2.15 mH	
Motor Phases	2	
Bearing Type	Roller Bearing	
Nominal Airgap	0.0015"	
Moving Mass	0.60 lbs	272 g
Totas Mass	9.5 lbs	4300 g

**NOTE:**

- Electrical specs are per individual motor
- Moving mass is per individual moving assembly
- Total mass is for entire stage assembly