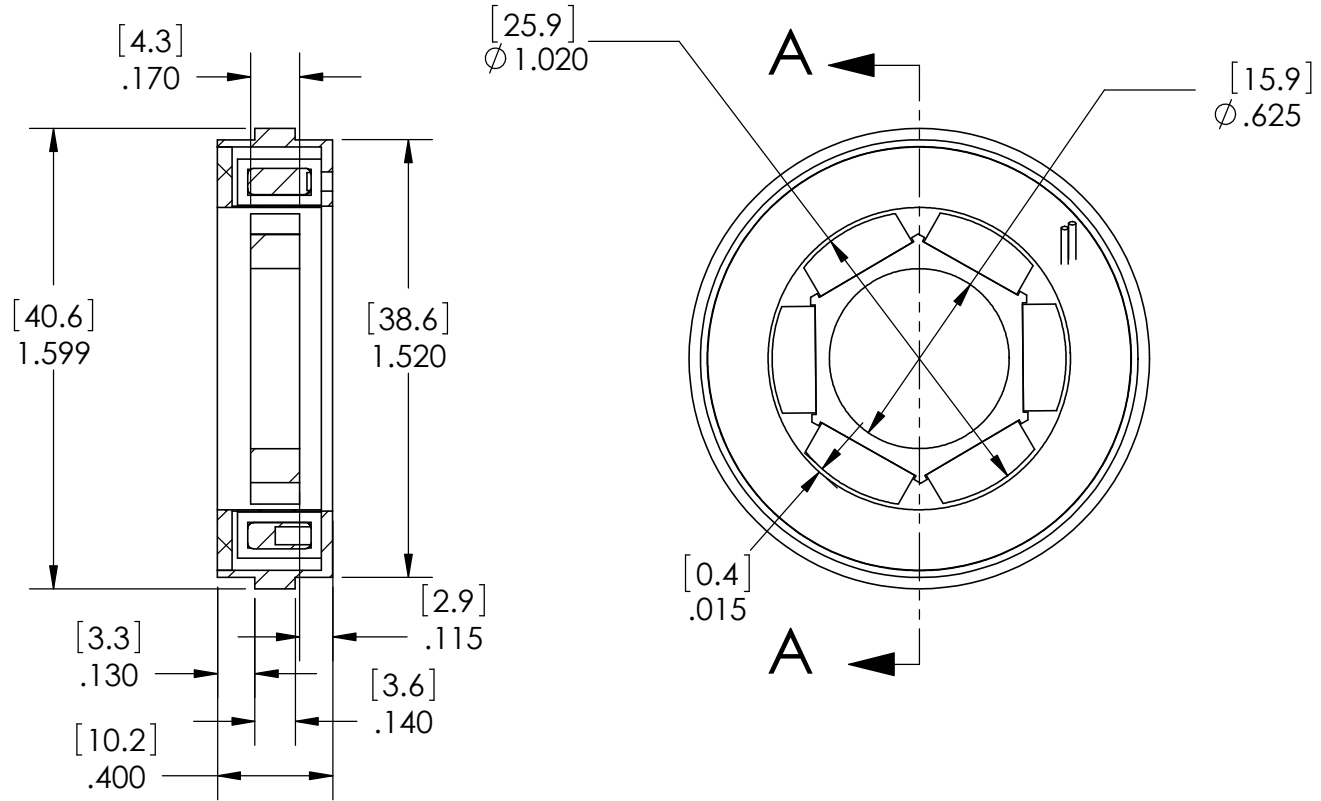
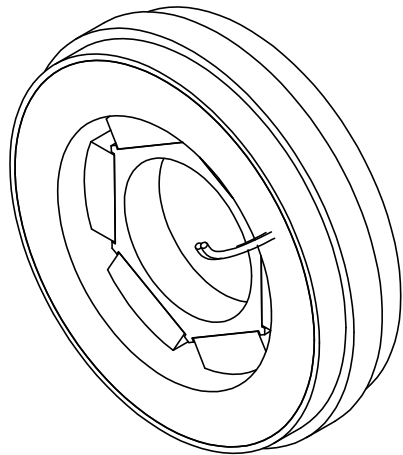


These drawings and specifications are the property of H2W Technologies, Inc. They are issued in confidence and shall not be reproduced, copied, or used without written permission from H2W Technologies, Inc.



SECTION A-A



H2W Technologies, Inc.

28310-C Ave Crocker Valencia, CA 91355 USA
 Tel: (661)-702-9346 Fax: (661)-702-9348
 www.h2wtech.com

UNLESS SPECIFIED OTHERWISE:
 All dimensions are in inches
 Standard Tolerances are as follows
 .XXX ±.005 ANGLES ±1°
 .XX ±.010 FILLETS AND
 X ±.020 CORNERS .010
 Remove All Burrs and Sharp Edges

MATERIAL			
FINISH			
DRAWN MPW	DATE 8-13-02	APPROVED FGW	DATE 8-13-02

TITLE TMR-016-16-007-6			
DWG # 80-0022	REV A	ECN	

LIMITED ANGLE TORQUE MOTOR SPECIFICATIONS

Motor P/N	TMR-016-16-007-6	
Device Type	MR	
Stroke	16 degrees	0.70 radians
Radial Clearance	0.015 in	0.64 mm
Housed with Bearings	No	
Rotor Inertia	0.59 oz-in ²	1.07 E-6 kg-m ²
Total Mass	0.07 lbs	32.1 grams
Resistance @ 20C	3.4 ohms	
Inductance @ 20C	0.4 mH	
Electrical Time Constant	0.13 msec	
Motor Constant	1.40 in-oz/sqrt(watt)	0.98 N-cm/sqrt(watt)
Torque Constant	2.6 in-oz/amp	1.8 N-cm/amp
Back EMF	1.9 E-4 V/rpm	1.9 E-3 V/rad/sec
Torque @ 100% Duty	4 in-oz	2.8 N-cm
Power @ 100% Duty	8 watts	
Current @ 100% Duty	1.5 amps	
Torque @ 10% Duty	11 in-oz	7.7 N-cm
Power @ 10% Duty	62 watts	
Current @ 10% Duty	4.2 amps	

* Values based on calculations and are for reference only, actual values will be confirmed upon shipment. As a rule of thumb the values contained are +/- 10% unless otherwise stated within the table.

TITLE TMR-016-16-007-6		
DWG #	REV	SHEET
80-0022	A	2 of 2