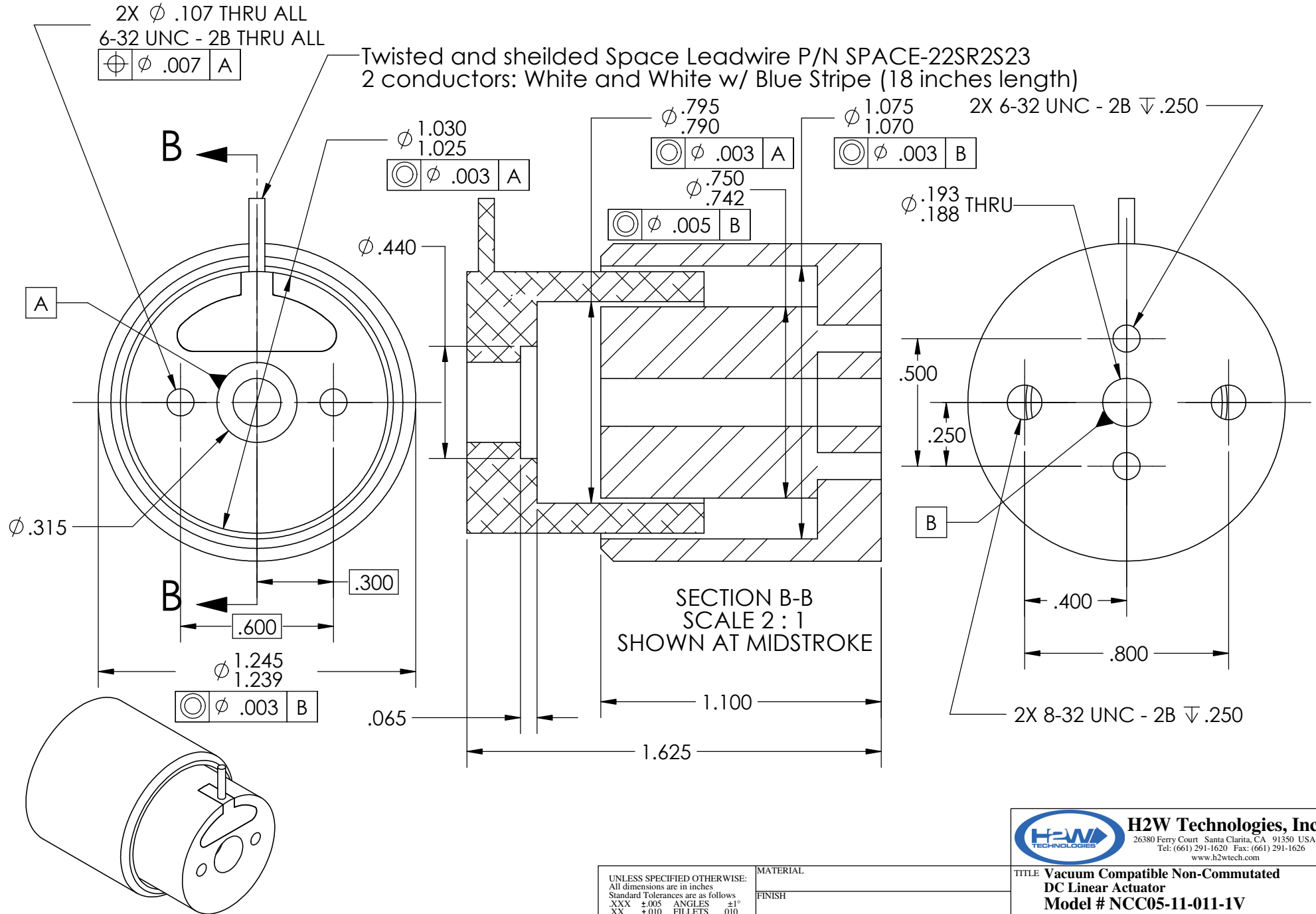


# REVISION TABLE

REV	ECN#	DESCRIPTION	REV BY	APPROVED	DATE
---	---	Original Drawing	JRM	MPW	10-27-15



UNLESS SPECIFIED OTHERWISE:  
All dimensions are in inches  
Standard Tolerances are as follows  
.XXX  $\pm$ .005 ANGLES  $\pm$ 1°  
.XX  $\pm$ .010 FILLETS .010  
.X  $\pm$ .020 CORNERS .010  
Remove All Burs and Sharp Edges

## MATERIAL

## FINISH

DRAWN	DATE	APPROVED	DATE
JRM	10-27-15	MPW	10-27-15



**H2W Technologies, Inc.**  
26380 Ferry Court Santa Clarita, CA 91350 USA  
Tel: (661) 291-1620 Fax: (661) 291-1626  
www.h2wtech.com

**TITLE** Vacuum Compatible Non-Commutated  
DC Linear Actuator  
Model # NCC05-11-011-1V

DWG #	REV	SHEET
30-1214	---	1 of 2

NON-COMM ACTUATOR SPECIFICATIONS		
Motor P/N	NCC05-11-011-1V	
Device Type	Moving Coil	
Stroke	0.5 in	12.7 mm
Radial Clearance	0.020 in	0.51 mm
Bearing Type	None Provided	
Moving Mass	0.28 lbs	34 grams
Total Mass	0.77 lbs	142 grams
Resistance @ 20C	2.75 ohms	
Inductance @ 20C	1.1 mH	
Electrical Time Constant	0.4 msec	
Motor Constant	0.57 lbs/sqrt(watt)	2.5 N/sqrt(watt)
Force Constant	0.9 lbs/amp	4.1 N/amp
Back EMF	0.11 V/ips	4.1 V/m/sec
Force @ 100% Duty	0.8 lbs	3.6 N
Power @ 100% Duty	2 watts	
Current @ 100% Duty	0.9 amps	
Force @ 10% Duty	2.4 lbs	10.7 N
Power @ 10% Duty	18 watts	
Current @ 10% Duty	2.7 amps	