

1

2

3

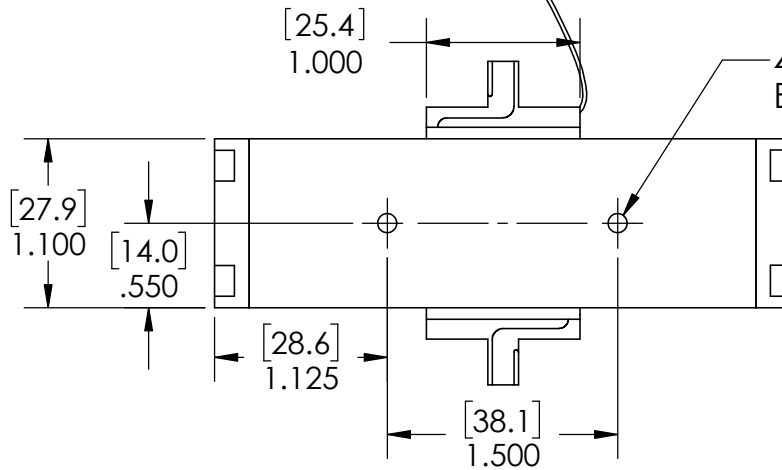
4

5

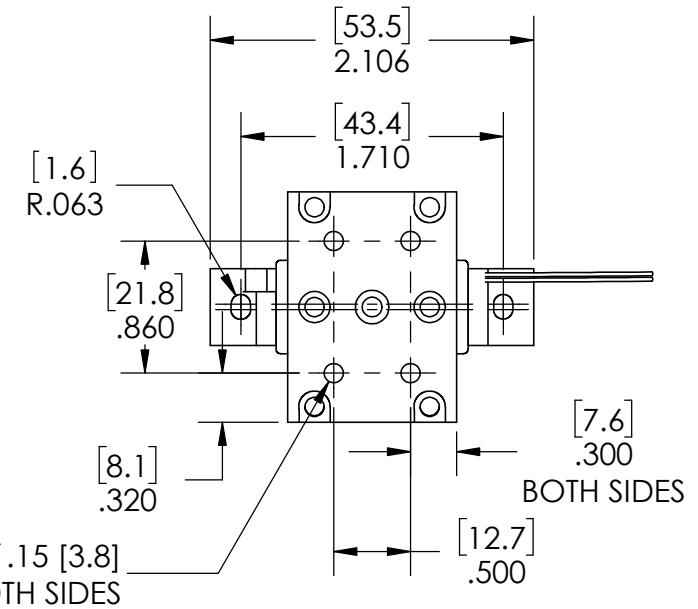
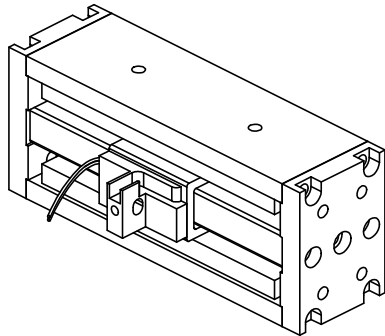
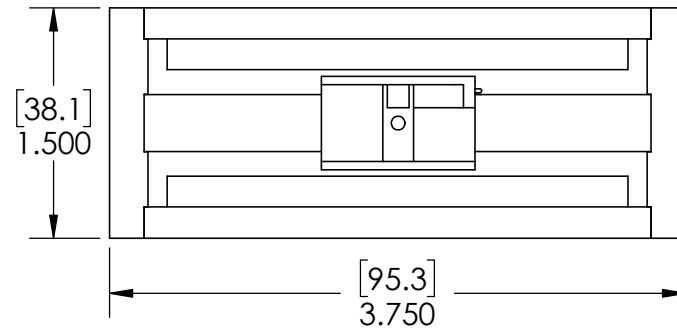
REVISION TABLE

REV	ECN#	DESCRIPTION	REV BY	APPROVED	DATE
---	---	Original Drawing	JRM	MPW	7-29-08
A	---	Added specification sheet (Sheet 2)	JRM	MPW	7-29-08

2X POWER LEADS

4X TAP 4-40 ∇ .15 [3.8]
BOTH SIDES

MOTION



H2W Technologies, Inc.
Santa Clarita, CA 91350 USA
Tel: (661) 291-1620
www.h2wtech.com

These drawings and specifications are the property of H2W Technologies, Inc. They are issued in confidence and shall not be reproduced, copied, or used without written permission from H2W Technologies, Inc.

UNLESS SPECIFIED OTHERWISE:
All dimensions are in inches
Standard Tolerances are as follows
.XXX \pm .005 ANGLES \pm 1°
.XX \pm .010 FILLETS .010
.X \pm .020 CORNERS .010
Remove All Burrs and Sharp Edges

**FOR
REFERENCE
ONLY**

MATERIAL

FINISH

TITLE

Voice Coil Actuator
Model #: NCC20-15-027-1RC

DWG # **30-0769**REV **A**

DATE 7-29-08 SHEET 1 of 2

1

2

3

4

5

A

A

B

B

C

C

D

D

MOVING COIL NON-COMM ACTUATOR SPECIFICATIONS

Motor P/N	NCC20-15-027-1RC	
Stroke	2.00"	50.8 mm
Radial Clearance	0.025" per side	0.64 mm per side
Bearing Type	None Provided	
Moving Mass	0.09 lbs	39 grams
Total Mass	1.35 lbs	615 grams
Resistance @ 20C	5.6 ohms	
Inductance @ 20C	5.9 mH	
Electrical Time Constant	1.05 msec	
Motor Constant	0.65 LBS/SQRT(Watt)	2.89 N/SQRT(Watt)
Force Constant	1.5 LBS/Amp	6.65 N/Amp
Back EMF	0.17 V/ips	6.65 V/m/sec
Continuous Force	2.7 LBS	12.0 N
Max Power @ 100% Duty	17 Watts	
Peak Force	7.0 LBS	31.2 N
Max Power @ 10% Duty	116 Watts	



H2W Technologies, Inc.
 Santa Clarita, CA 91350 USA
 Tel: (661) 291-1620
www.h2wtech.com

These drawings and specifications are the property of H2W Technologies, Inc. They are issued in confidence and shall not be reproduced, copied, or used without written permission from H2W Technologies, Inc.

UNLESS SPECIFIED OTHERWISE:
 All dimensions are in inches
 Standard Tolerances are as follows
 .XXX ±.005 ANGLES ±.1°
 .XX ±.010 FILLETS .010
 .X ±.020 CORNERS .010
 Remove All Burrs and Sharp Edges

**FOR
REFERENCE
ONLY**

MATERIAL

FINISH

TITLE

Voice Coil Actuator
 Model #: NCC20-15-027-1RC

DWG #

30-0769

REV

A

DATE

7-29-08

SHEET

2 of 2