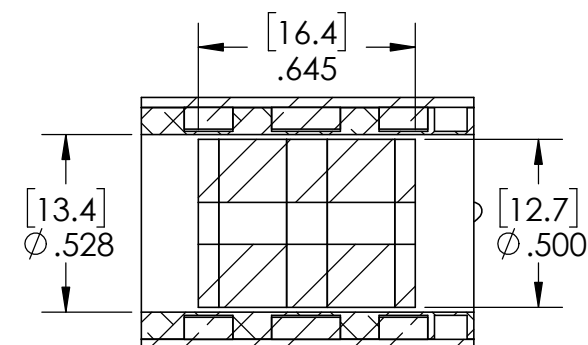
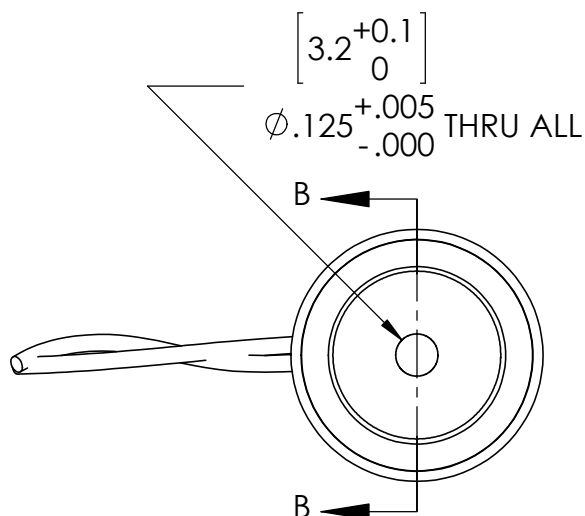
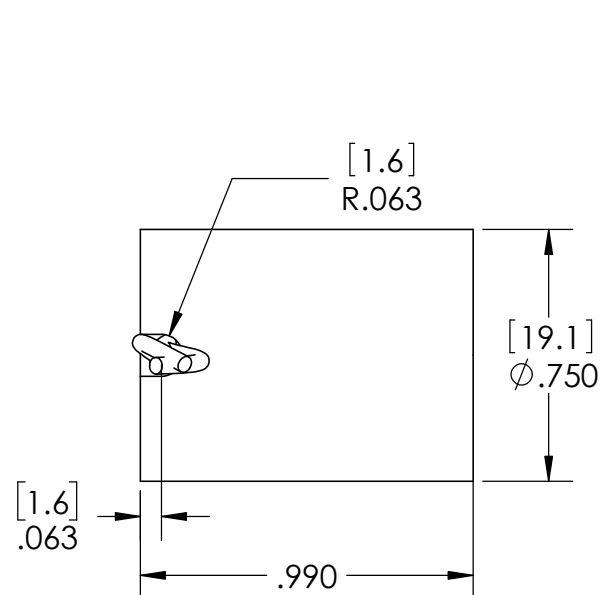
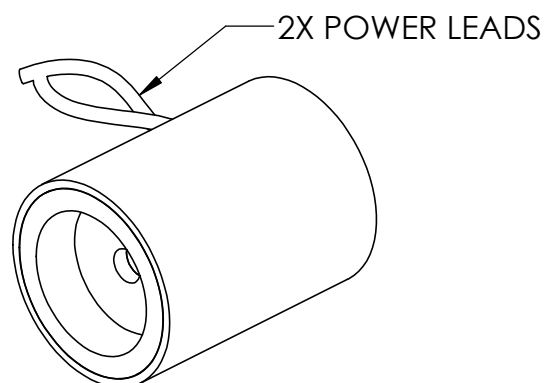


ACTUATOR SHOWN AT MIDSTROKE

REVISION TABLE					
REV	ECN#	DESCRIPTION	REV BY	APPROVED	DATE
A	---	Original Drawing	JRM	MPW	10-23-06



SECTION B-B
SCALE 1.75 : 1



H2W Technologies, Inc.
Santa Clarita, CA 91350 USA
Tel: (661) 291-1620
www.h2wtech.com

These drawings and specifications are the property of H2W Technologies, Inc. They are issued in confidence and shall not be reproduced, copied, or used without written permission from H2W Technologies, Inc.

UNLESS SPECIFIED OTHERWISE:
All dimensions are in inches
Standard Tolerances are as follows
.XXX ±.005 ANGLES ±1°
.XX ±.010 FILLETS .010
.X ±.020 CORNERS .010
Remove All Burrs and Sharp Edges

**FOR
REFERENCE
ONLY**

MATERIAL

FINISH

TITLE

Voice Coil Actuator
Model #: NCM01-08-008-3X

DWG # **30-0538**

REV **A**

DATE 10-23-06 SHEET 1 of 2

1

2

3

4

5

A

A

B

B

C

C

D

D

Specifications

P/N	NCM01-08-008-3X	
Stroke	0.085"	2.2 mm
Radial Clearance (per side)	0.014"	0.4 mm
Bearing Type	None Provided	
Motor Constant	0.39 lbs/sqrt (watt)	1.74 N/sqrt(watt)
Continuous Force	0.6 lbs	2.7 N
Max Power @ 100% Duty	2.4 watts	
Peak Force @ 10% Duty	1.8 lbs	8.1 N
Max Power @ 10% Duty	21 watts	
Resistance @ 20 C	17.5 ohm	
Inductance @ 20 C	1.7 mH	
Electrical Time Constant	0.097 msec	
Back EMF	0.18 V/ips	7.09 V/m/s
Force per Current (Ki)	1.64 lbs/amp	7.30 N/amp
Moving Mass	0.5 oz	15 grams
Total Mass	1.2 oz	35 grams



H2W Technologies, Inc.
 Santa Clarita, CA 91350 USA
 Tel: (661) 291-1620
www.h2wtech.com

These drawings and specifications are the property of H2W Technologies, Inc. They are issued in confidence and shall not be reproduced, copied, or used without written permission from H2W Technologies, Inc.

UNLESS SPECIFIED OTHERWISE:
 All dimensions are in inches
 Standard Tolerances are as follows
 .XXX ±.005 ANGLES ±.1°
 .XX ±.010 FILLETS .010
 .X ±.020 CORNERS .010
 Remove All Burrs and Sharp Edges

**FOR
REFERENCE
ONLY**

MATERIAL

FINISH

TITLE

Voice Coil Actuator
Model #: NCM01-08-008-3X

DWG #

30-0538

REV

A

DATE

10-23-06

SHEET

2 of 2