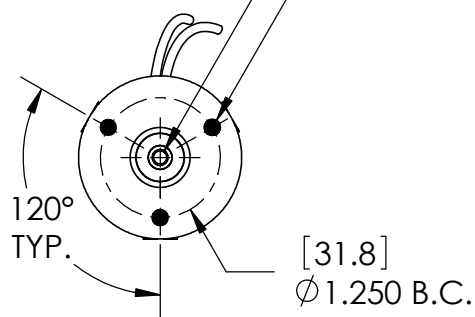


# ACTUATOR SHOWN AT MIDSTROKE

REVISION TABLE				
REV	ECN#	DESCRIPTION	REV BY	APPROVED
A	---	---	JRM	MPW
			DATE	
			11-16-10	

TAP 8-32 UNC  
▽.330 [8.4]  
BOTH SIDES

3X TAP 8-32 UNC  
▽.330 [8.4]  
BOTH SIDES



[21.8]  
.860  
BOTH  
SIDES

[6.3]  
Ø .2495

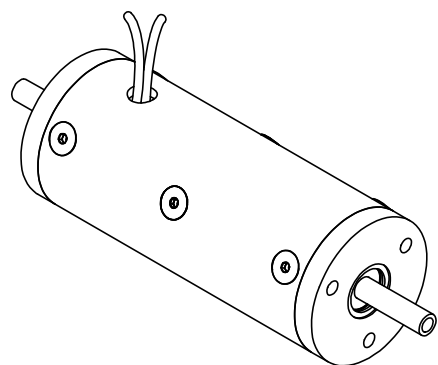
MOTION

2X POWER LEADS

[43.2]  
Ø 1.700

[108.7]  
4.280

[152.4]  
6.000



**H2W Technologies, Inc.**  
Santa Clarita, CA 91350 USA  
Tel: (661) 291-1620  
[www.h2wtech.com](http://www.h2wtech.com)

These drawings and specifications are the property of H2W Technologies, Inc. They are issued in confidence and shall not be reproduced, copied, or used without written permission from H2W Technologies, Inc.

UNLESS SPECIFIED OTHERWISE:  
All dimensions are in inches  
Standard Tolerances are as follows  
.XXX ±.005 ANGLES ±1°  
.XX ±.010 FILLETS .010  
.X ±.020 CORNERS .010  
Remove All Burrs and Sharp Edges

**FOR  
REFERENCE  
ONLY**

MATERIAL

FINISH

TITLE

**Voice Coil Actuator**  
**Model #: NCM08-17-050-2LB**

DWG # **30-0897**

REV **A**

DATE 11-16-10 SHEET 1 of 2

1

2

3

4

5

A

A

B

B

C

C

D

D

## MOVING MAGNET NON-COMM ACTUATOR SPECIFICATIONS

Motor P/N	NCM08-17-050-2LB	
Stroke	0.75"	19.1 mm
Radial Clearance	N/A in	N/A mm
Bearing Type	Linear Bushings	
Moving Mass	0.37 lbs	166 grams
Total Mass	1.54 lbs	700 grams
Resistance @ 20C	6.4 ohms	
Inductance @ 20C	2.9 mH	
Electrical Time Constant	0.46 msec	
Motor Constant	1.11 LBS/SQRT(Watt)	4.93 N/SQRT(Watt)
Force Constant	2.79 LBS/Amp	12.4 N/Amp
Back EMF	0.31 V/ips	12.4 V/m/sec
Continuous Force	5.0 LBS	22.3 N
Max Power @ 100% Duty	20 Watts	
Peak Force	15.0 LBS	66.8 N
Max Power @ 10% Duty	183 Watts	



**H2W Technologies, Inc.**  
 Santa Clarita, CA 91350 USA  
 Tel: (661) 291-1620  
[www.h2wtech.com](http://www.h2wtech.com)

These drawings and specifications are the property of H2W Technologies, Inc. They are issued in confidence and shall not be reproduced, copied, or used without written permission from H2W Technologies, Inc.

UNLESS SPECIFIED OTHERWISE:  
 All dimensions are in inches  
 Standard Tolerances are as follows  
 .XXX ±.005 ANGLES ±.1°  
 .XX ±.010 FILLETS .010  
 .X ±.020 CORNERS .010  
 Remove All Burrs and Sharp Edges

**FOR  
REFERENCE  
ONLY**

MATERIAL

FINISH

TITLE

Voice Coil Actuator  
 Model #: NCM08-17-050-2LB

DWG #

**30-0897**

REV

**A**

DATE

11-16-10

SHEET

2 of 2