

1

2

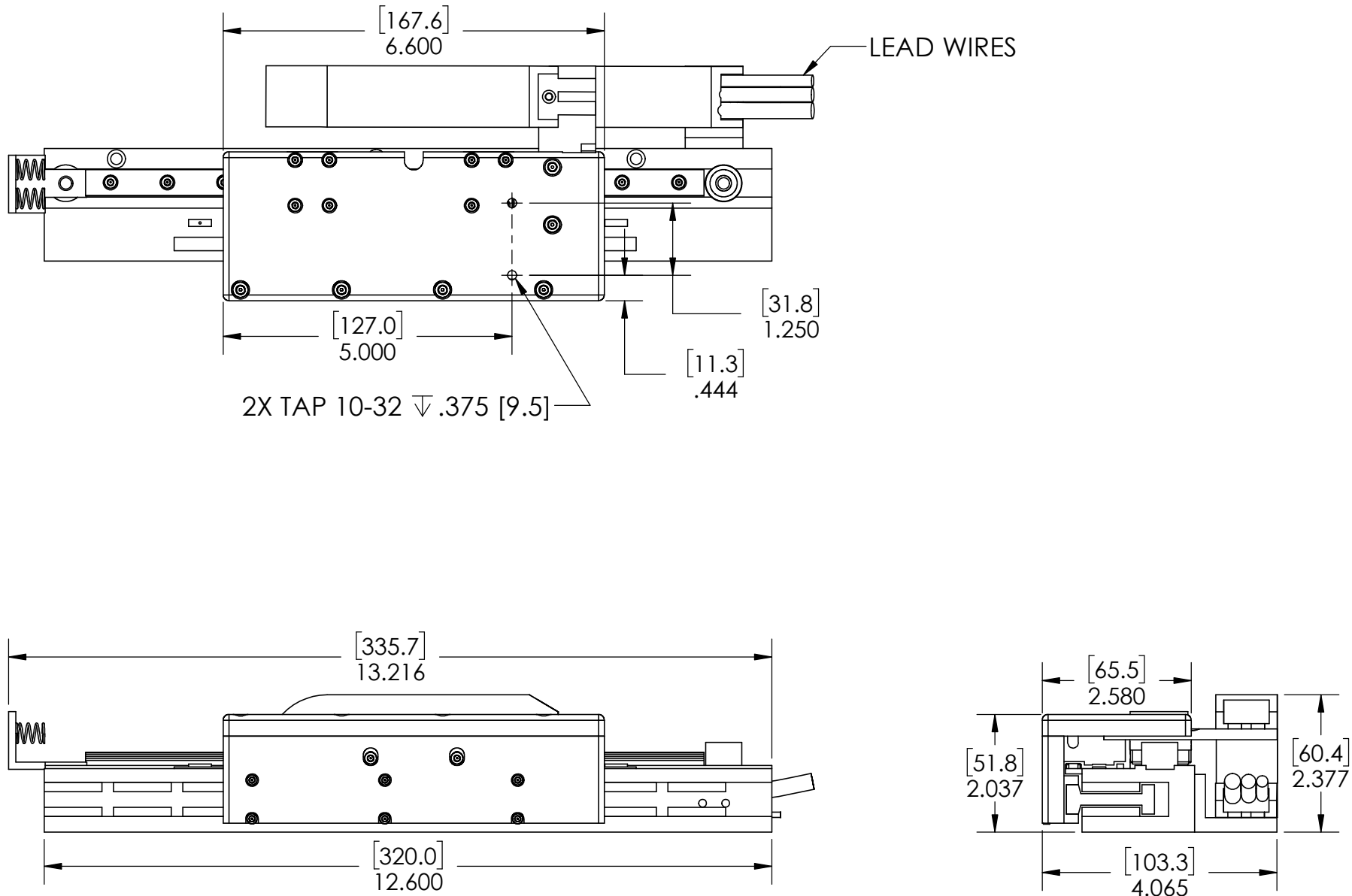
3

4

5

## REVISION TABLE

REV	ECN#	DESCRIPTION	REV BY	APPROVED	DATE
---	---	Original Drawing	OOG	MPW	5-20-15
A	1760	Changed Table (Top)/Side to better fit mounting holes	OOG	MPW	6-1-16



**H2W Technologies, Inc.**  
Santa Clarita, CA 91350 USA  
Tel: (661) 291-1620  
[www.h2wtech.com](http://www.h2wtech.com)

These drawings and specifications are the property of H2W Technologies, Inc. They are issued in confidence and shall not be reproduced, copied, or used without written permission from H2W Technologies, Inc.

UNLESS SPECIFIED OTHERWISE:  
All dimensions are in inches  
Standard Tolerances are as follows  
.XXX  $\pm$ .005 ANGLES  $\pm$ 1°  
.XX  $\pm$ .010 FILLETS .010  
.X  $\pm$ .020 CORNERS .010  
Remove All Burrs and Sharp Edges

**FOR  
REFERENCE  
ONLY**

MATERIAL

FINISH

TITLE  
Single Rail Positioning Stage Model #:  
**SRS-006-03-010-A**

DWG # **40-0311**

REV **A**

DATE 6-1-16 SHEET 1 of 3

1

2

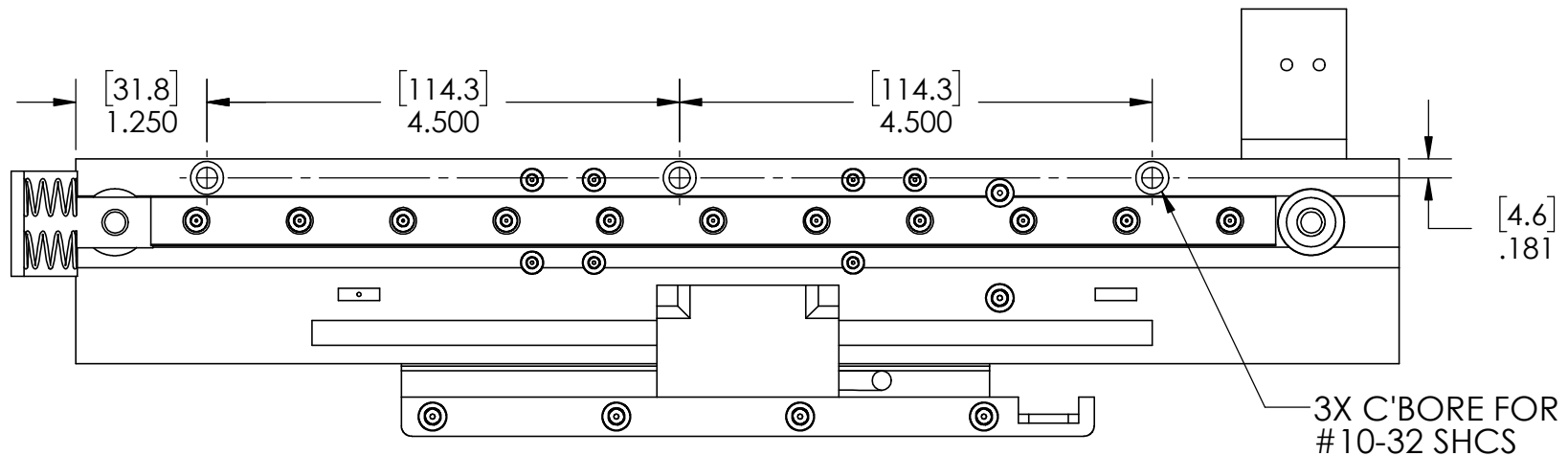
3

4

5

# MOUNTING PROVISIONS

PARTS HAVE BEEN HIDDEN  
TO SHOWN MOUNTING HOLES



3X C'BORE FOR  
#10-32 SHCS

A

A

B

B

C

C

D

D



**H2W Technologies, Inc.**  
Santa Clarita, CA 91350 USA  
Tel: (661) 291-1620  
[www.h2wtech.com](http://www.h2wtech.com)

These drawings and specifications are the property of H2W Technologies, Inc. They are issued in confidence and shall not be reproduced, copied, or used without written permission from H2W Technologies, Inc.

UNLESS SPECIFIED OTHERWISE:  
All dimensions are in inches  
Standard Tolerances are as follows  
XXX ±.005 ANGLES ±.1°  
.XX ±.010 FILLETS .010  
.X ±.020 CORNERS .010  
Remove All Burrs and Sharp Edges

**FOR  
REFERENCE  
ONLY**

MATERIAL  
FINISH

TITLE  
Single Rail Positioning Stage Model #:  
**SRS-006-03-010-A**

DWG # **40-0311**  
REV **A**  
DATE **6-1-16** SHEET **2 of 3**

1

2

3

4

5

A

A

B

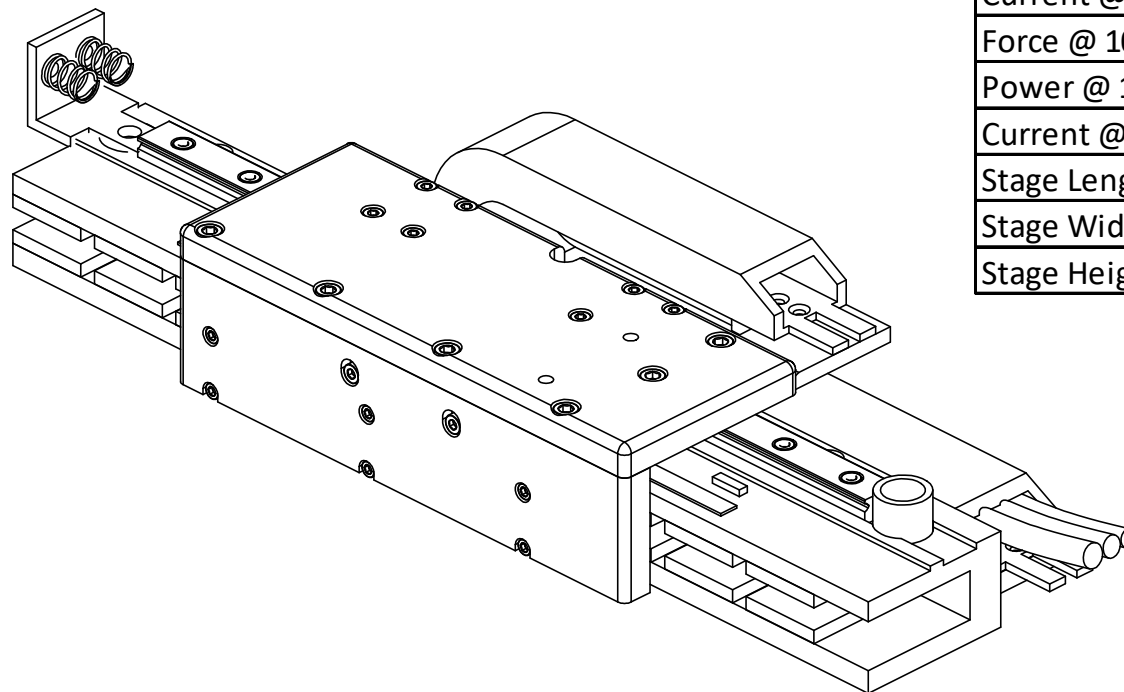
B

C

C

D

D



### SINGLE RAIL POSITIONING STAGE SPECIFICATIONS

Motor P/N	BLDM-B04	
Stroke	6 in	152.4 mm
Encoder Resolution	5 micron	
Bearing Type	Recirculating Ball	
Moving Mass	1.25 lbs	567 g
Total Mass	7.75 lbs	3515 g
Resistance @ 20C	6.4 ohms	
Inductance @ 20C	4.0 mH	
Electrical Time Constant	1 msec	
Motor Constant	1.2 LBS/SQRT(Watt)	5.20 N/SQRT(Watt)
Force Constant	3.0 LBS/Amp	13.2 N/Amp
Back EMF	0.34 V/ips	13.2 V/m/sec
Force @ 100% Duty	6.2 lbs	27.8 N
Power @ 100% Duty	39.3 watts	
Current @ 100% Duty	2.1 amps	
Force @ 10% Duty	18.7 lbs	83.3 N
Power @ 10% Duty	353.7 watts	
Current @ 10% Duty	6.3 amps	
Stage Length	12.6 in	320 mm
Stage Width	4.08 in	103.6 mm
Stage Height	2.03	51.6 mm



**H2W Technologies, Inc.**  
 Santa Clarita, CA 91350 USA  
 Tel: (661) 291-1620  
[www.h2wtech.com](http://www.h2wtech.com)

These drawings and specifications are the property of H2W Technologies, Inc. They are issued in confidence and shall not be reproduced, copied, or used without written permission from H2W Technologies, Inc.

UNLESS SPECIFIED OTHERWISE:  
 All dimensions are in inches  
 Standard Tolerances are as follows  
 .XXX ±.005 ANGLES ±.1°  
 .XX ±.010 FILLETS .010  
 .X ±.020 CORNERS .010  
 Remove All Burrs and Sharp Edges

**FOR  
 REFERENCE  
 ONLY**

MATERIAL

FINISH

TITLE  
 Single Rail Positioning Stage Model #:  
**SRS-006-03-010-A**

DWG # **40-0311**

REV **A**

DATE 6-1-16

SHEET 3 of 3