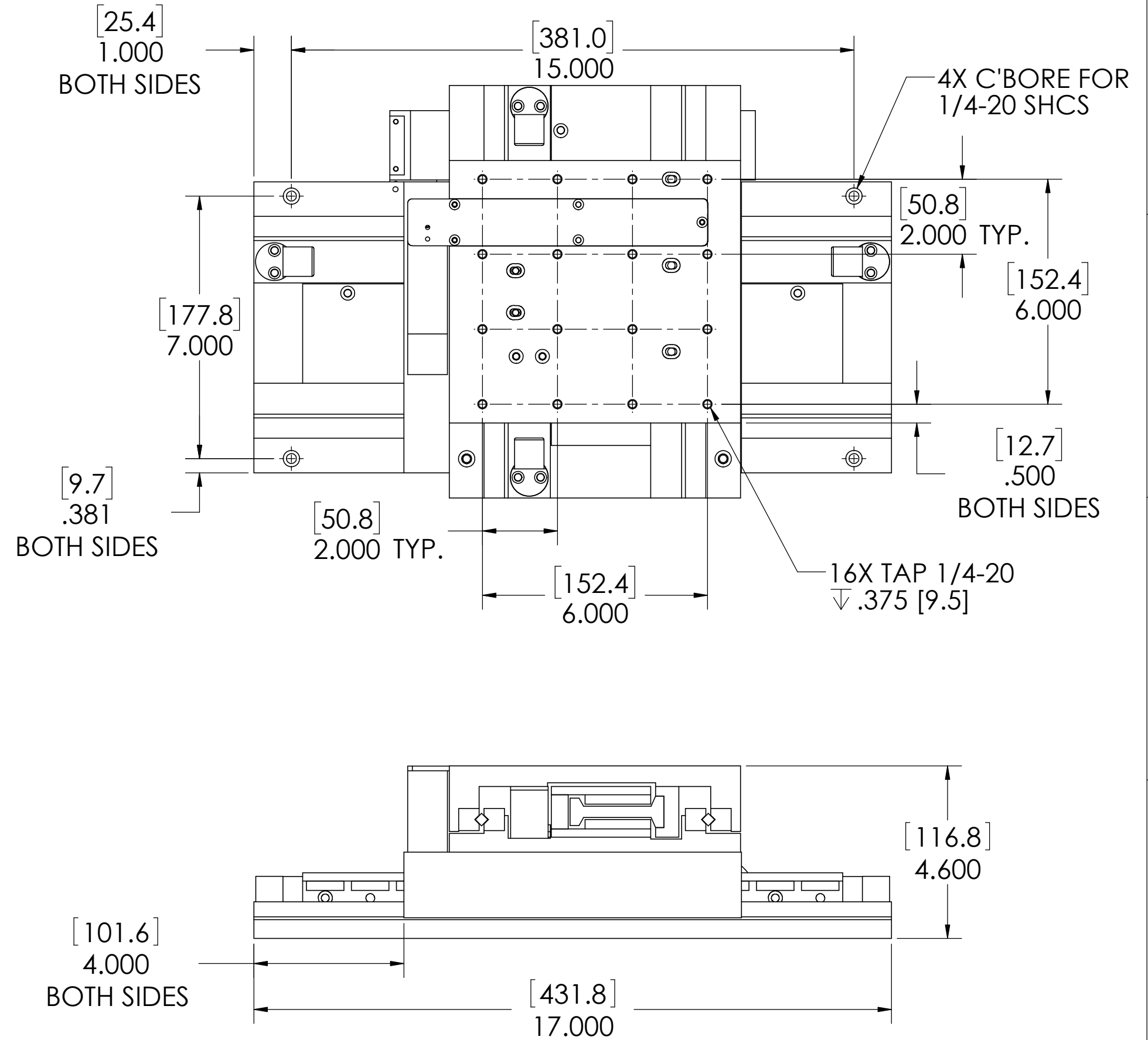


REVISION TABLE					
REV	ECN#	DESCRIPTION	REV BY	APPROVED	DATE
A	--	Original Drawing	OOG	MPW	7-8-09



1

2

3

4

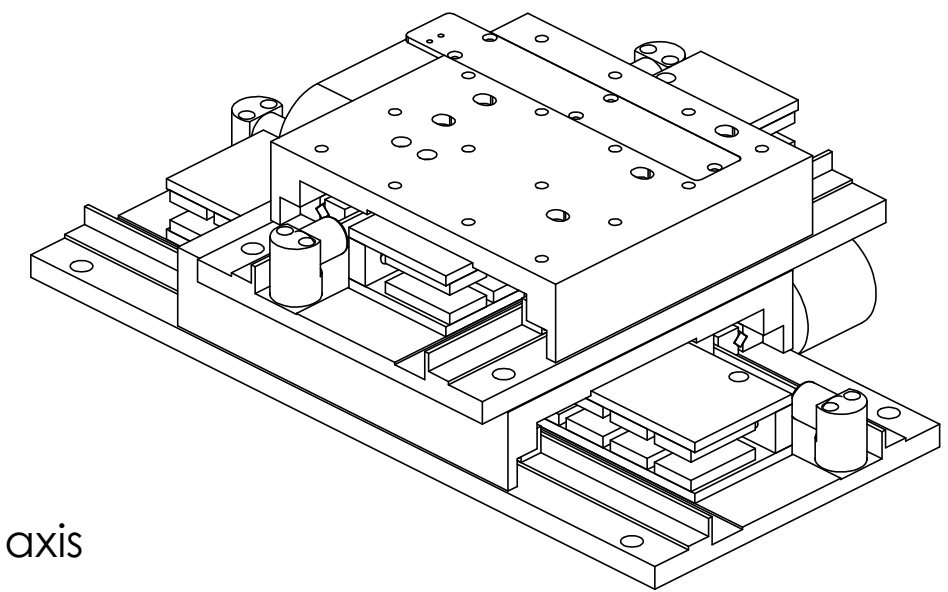
5

CROSSED ROLLER POSITIONING STAGE SPECIFICATIONS (Top Axis)

Motor P/N	BLDC-02	
Stroke	4 in	101.6 mm
Encoder Resolution	0.1 micron	
Bearing Type	Crossed Roller	
Moving Mass	4.44 lbs	2013 g
Total Mass	20.92 lbs	9489 g
Resistance @ 20C	8.2 ohms	
Inductance @ 20C	6.0 mH	
Electrical Time Constant	0.7 msec	
Motor Constant	2.12 LBS/SQRT(Watt)	9.43 N/SQRT(Watt)
Force Constant	6.1 LBS/Amp	27.3 N/Amp
Back EMF	0.80 V/ips	31.5 V/m/sec
Force @ 100% Duty	20.6 lbs	91.6 N
Power @ 100% Duty	95 watts	
Current @ 100% Duty	1.6 amps	
Force @ 10% Duty	61.8 lbs	274.8 N
Power @ 10% Duty	846 watts	
Current @ 10% Duty	6.4 amps	
Stage Length	11 in	279.4 mm
Stage Width	8.88 in	225.55 mm
Stage Height	2.3 in	58.42 mm

CROSSED ROLLER POSITIONING STAGE SPECIFICATIONS (Bottom Axis)

Motor P/N	BLDC-02	
Stroke	6 in	152.4 mm
Encoder Resolution	0.1 micron	
Bearing Type	Crossed Roller	
Moving Mass	5.42 lbs	2458 g
Total Mass	31.42 lbs	14251 g
Resistance @ 20C	8.2 ohms	
Inductance @ 20C	6.0 mH	
Electrical Time Constant	0.7 msec	
Motor Constant	2.12 LBS/SQRT(Watt)	9.43 N/SQRT(Watt)
Force Constant	6.1 LBS/Amp	27.3 N/Amp
Back EMF	0.80 V/ips	31.5 V/m/sec
Force @ 100% Duty	20.6 lbs	91.6 N
Power @ 100% Duty	95 watts	
Current @ 100% Duty	1.6 amps	
Force @ 10% Duty	61.8 lbs	274.8 N
Power @ 10% Duty	846 watts	
Current @ 10% Duty	6.4 amps	
Stage Length	17 in	431.8 mm
Stage Width	9.66 in	245.36 mm
Stage Height	2.3 in	58.42 mm



- NOTES:
 1. Electrical specs & masses are per individual axis
 2. Total stage weight = 55 lbs [25 kg]