

REVISION TABLE					
REV	ECN#	DESCRIPTION	REV BY	APPROVED	DATE
---	---	Original Drawing	OOG	MPW	5-15-15

1

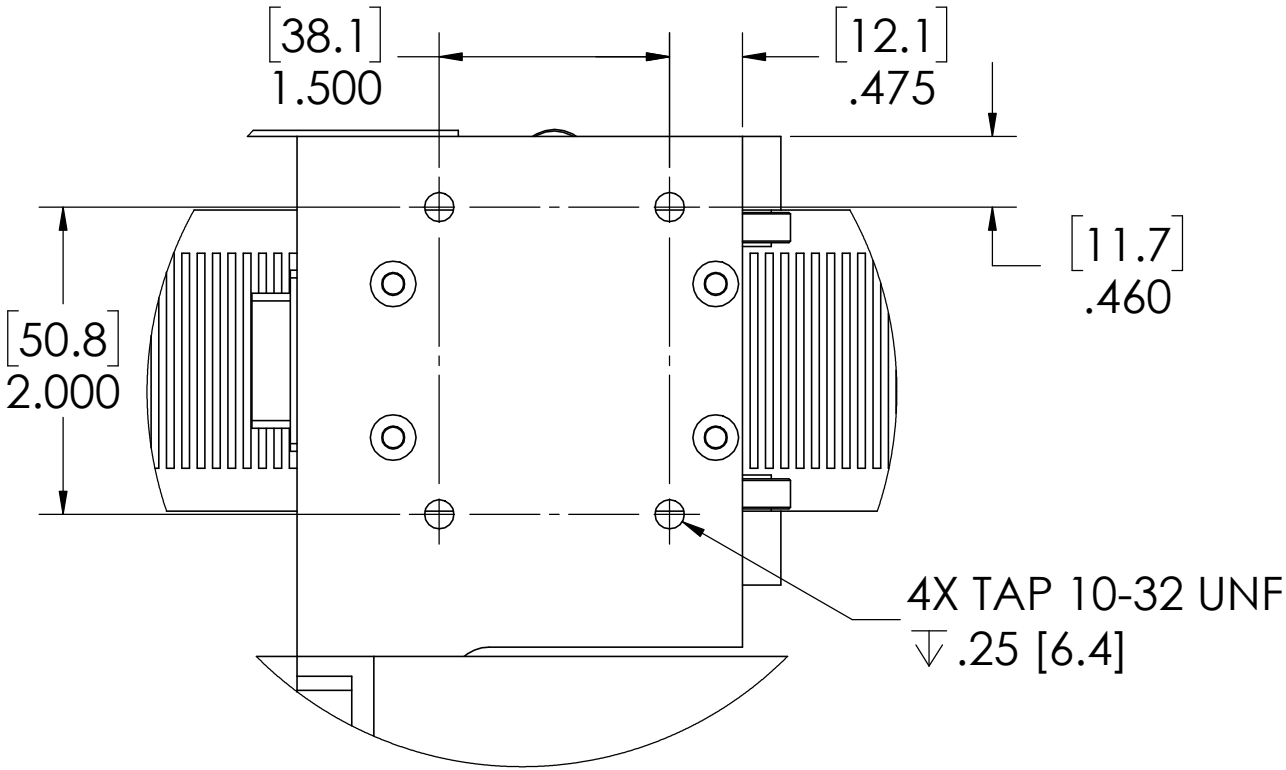
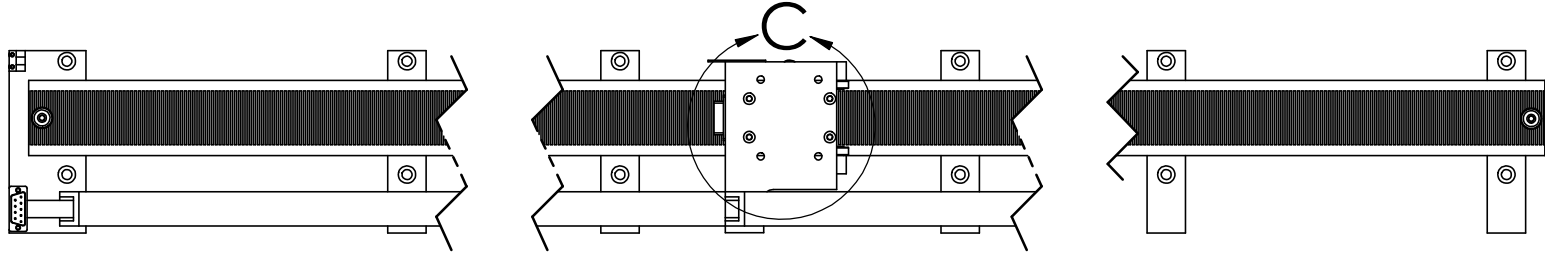
2

3

4

5

PAYLOAD MOUNTING FEATURES



DETAIL C
SCALE 2 : 2.5



H2W Technologies, Inc.
Santa Clarita, CA 91350 USA
Tel: (661) 291-1620
www.h2wtech.com

These drawings and specifications are the property of H2W Technologies, Inc. They are issued in confidence and shall not be reproduced, copied, or used without written permission from H2W Technologies, Inc.

UNLESS SPECIFIED OTHERWISE:
All dimensions are in inches
Standard Tolerances are as follows
.XXX ±.005 ANGLES ±.1°
.XX ±.010 FILLETS .010
.X ±.020 CORNERS .010
Remove All Burrs and Sharp Edges

**FOR
REFERENCE
ONLY**

MATERIAL

FINISH

TITLE

Linear Stepper Stage Model #:
LSS-060-04-060-C

DWG #

10-0609

REV

DATE

5-15-15

SHEET

2 of 3

1

2

3

4

5

A

B

C

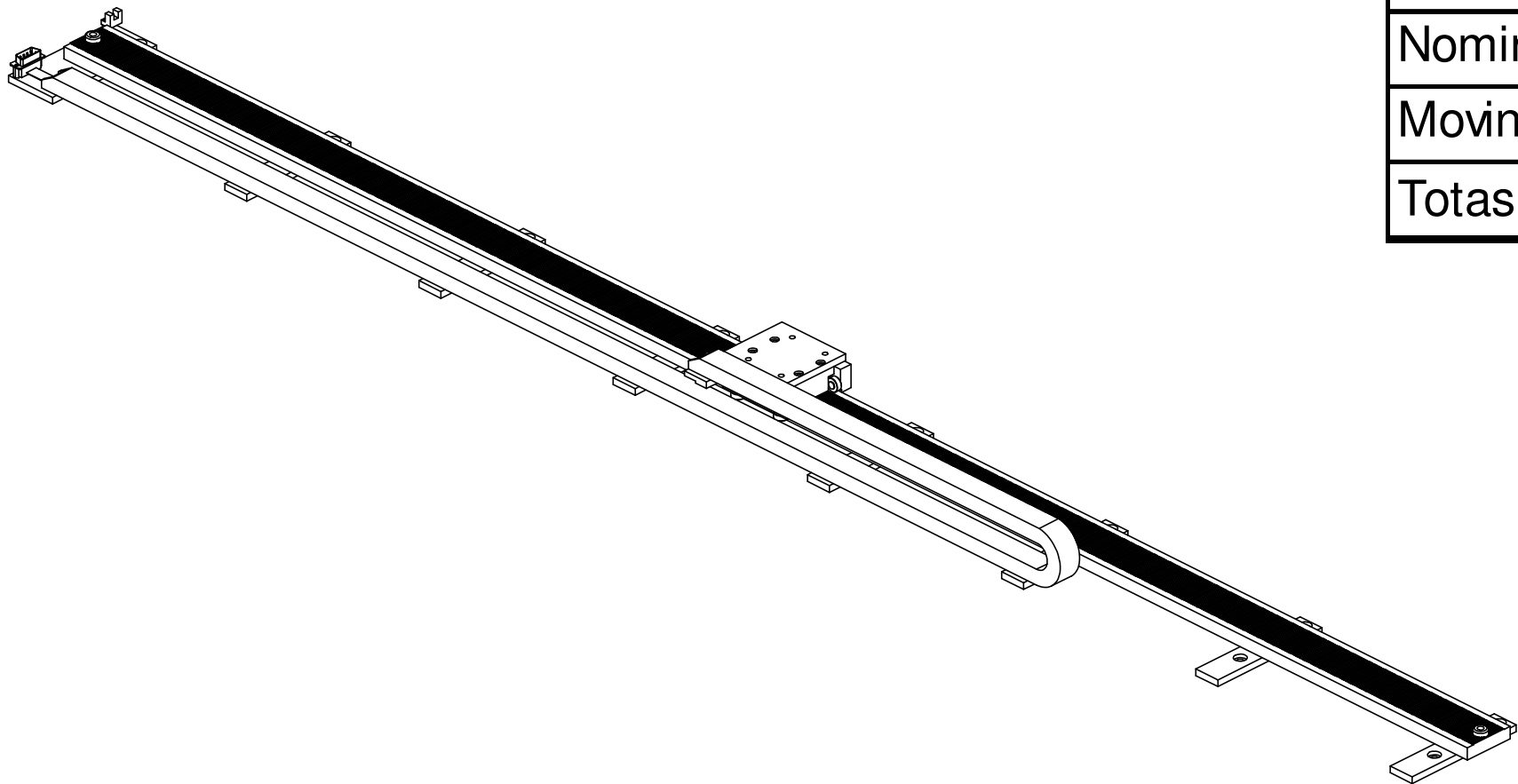
D

A

B

C

D



LINEAR STEPPER STAGE SPECIFICATIONS		
Motor P/N	STS-0620-R	
Continuous Force	6.0 lbs	26.7 N
Stroke	60.25in	1530mm
Encoder Resolution	NONE	
Rated Current	2.0 Amp	
Resistance/Phase @ 20C	2.40 ohms	
Inductance/Phase @ 20C	3.0 mH	
Motor Phases	2	
Bearing Type	Roller Bearing	
Nominal Airgap	0.0015"	
Moving Mass	0.91 lbs	0.4 kg
Totas Mass	18.0 lbs	8.1 kg