

1

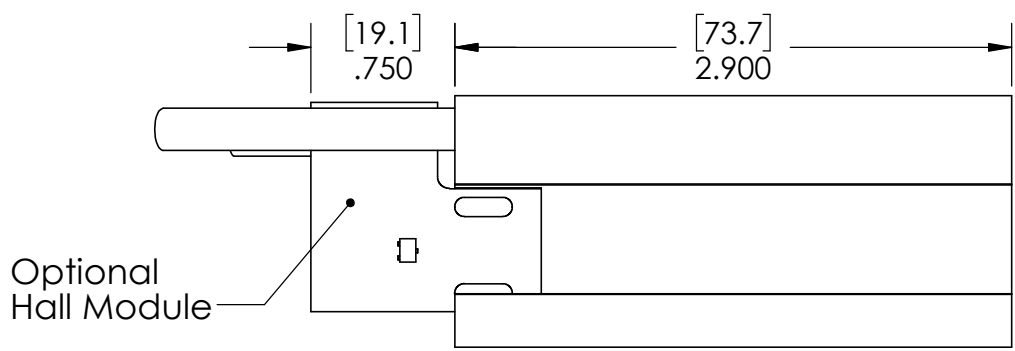
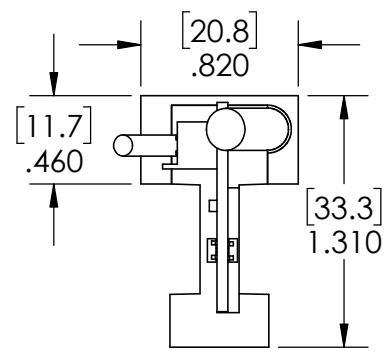
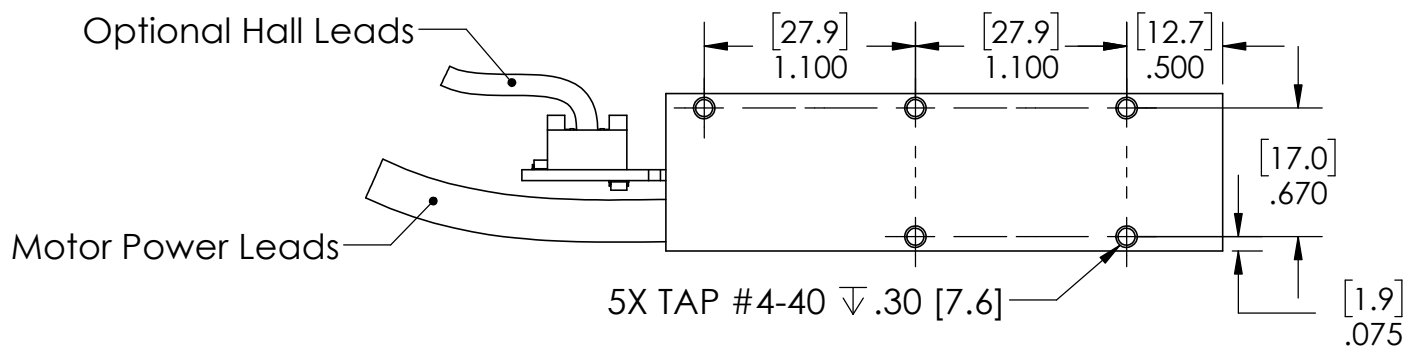
2

3

4

5

REVISION TABLE					
REV	ECN#	DESCRIPTION	REV BY	APPROVED	DATE
---	---	Original Drawing	SDC	MPW	5-21-05



STANDARD CABLE LENGTH = 1m

1

2

3

4

5

A

A

B

B

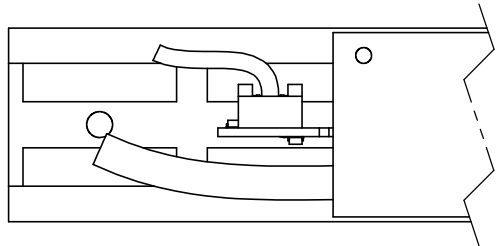
C

C

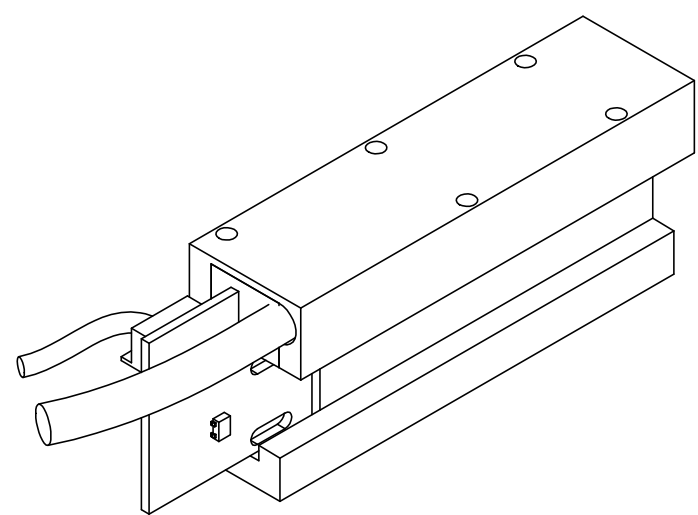
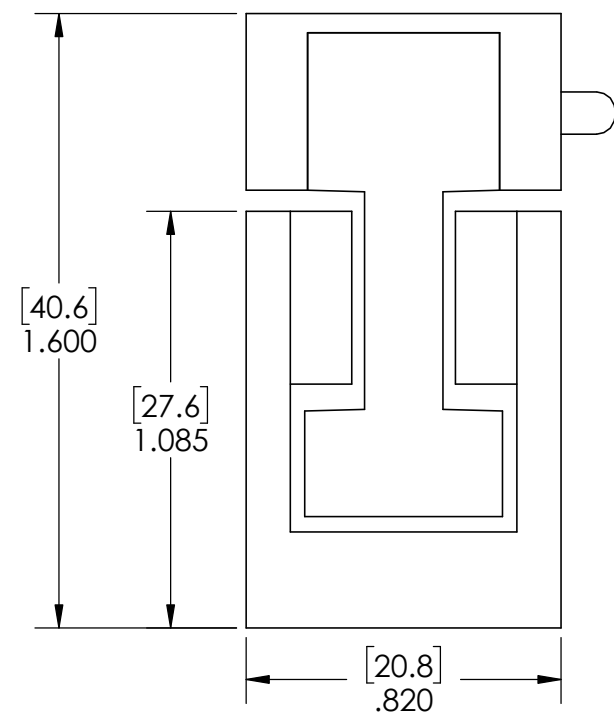
D

D

OPTIONAL HALL MODULE MUST BE IN
MAGNET TRACK FOR COMMUTATION



MOTOR COIL SHOWN
WITH MAGNET TRACK



H2W Technologies, Inc.
Santa Clarita, CA 91350 USA
Tel: (661) 291-1620
www.h2wtech.com

These drawings and specifications are the property of H2W Technologies, Inc. They are issued in confidence and shall not be reproduced, copied, or used without written permission from H2W Technologies, Inc.

UNLESS SPECIFIED OTHERWISE:
All dimensions are in inches
Standard Tolerances are as follows
.XXX ±.005 ANGLES ±.1°
.XX ±.010 FILLETS .010
.X ±.020 CORNERS .010
Remove All Burrs and Sharp Edges

**FOR
REFERENCE
ONLY**

MATERIAL
FINISH

TITLE
Ironless Motor Coil Model #: BLDM-A02

DWG #	20-0235
REV	----
DATE	5-21-15
SHEET	2 of 3

Motor Specifications		
BLDM-A02		
General		
Continuous Force	lbs [N]	1.2 [5.3]
Continuous Current	Amps	1.7
Continuous Power	Watts	11
Peak Force @ 10% Duty	lbs [N]	3.6 [16]
Peak Current @ 10% Duty	Amps	5.1
Peak Power @ 10% Duty	Watts	99
Electrical		
Force Constant	lbs/Amp [N/Amp]	0.7 [3.1]
Back EMF	V/in/sec [V/m/sec]	0.08 [3.1]
Resistance	Ohms	2.7
Inductance	mH	3.2
Electrical Time Constant	msec	0.2
Km Motor Constant	lbs/sqW [N/sqW]	0.43 [1.9]
Mechanical		
Electrical Cycle Length	in [mm]	2.4 [60.96]
Number of Poles	2	
Coil Assembly Length		
with Hall Sensor	in [mm]	3.45 [87.6]
without Hall Sensor	in [mm]	2.9 [73.7]
Coil Assembly Weight	lbs [kg]	0.17 [0.08]
Magnet Track Weight	lbs/in [kg/m]	0.2 [3.6]

Wiring	
Motor	
Phase A	White/Red Stripe
Phase B	White
Phase C	White/Black Stripe
Ground	White/Green Stripe
Thermostat 1	Blue
Thermostat 2	Orange
Hall Effect	
Hall A	White
Hall B	Red
Hall C	Black
Hall Ground	Green
Hall Power (+5-24VDC)	Brown, Orange, Violet, Yellow

