

1

2

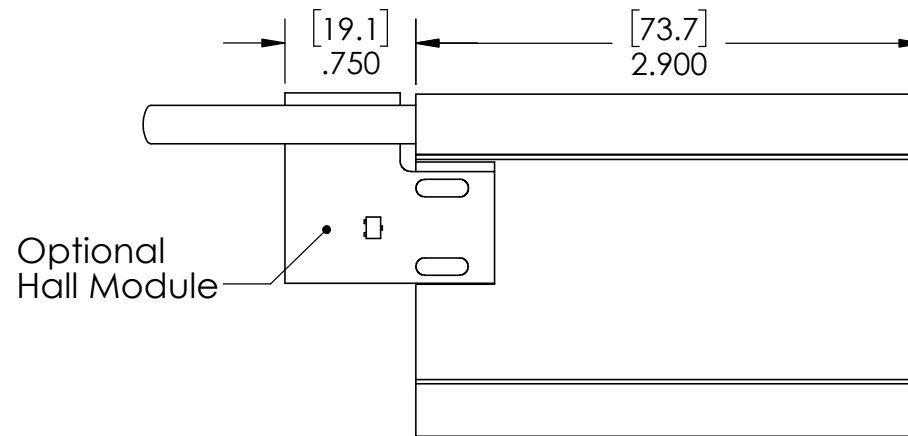
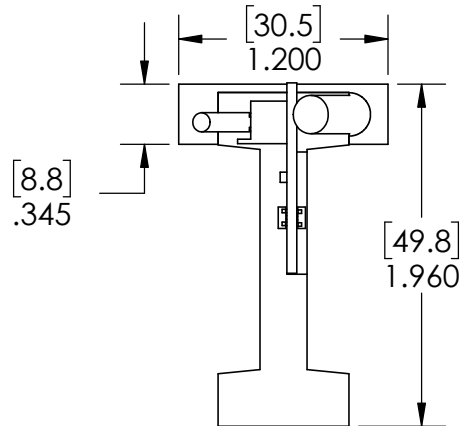
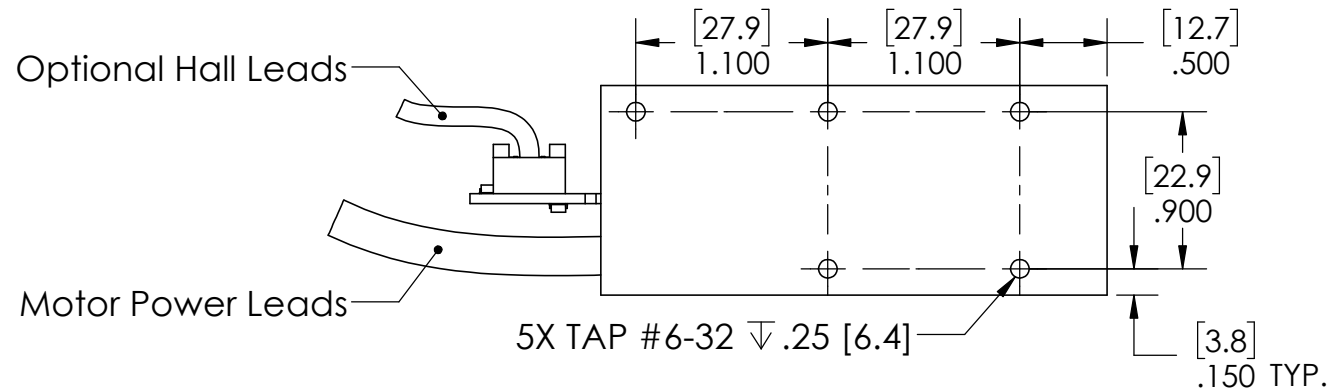
3

4

5

REVISION TABLE

| REV | ECN# | DESCRIPTION | REV BY | APPROVED | DATE |
|-----|------|------------------|--------|----------|---------|
| --- | --- | Original Drawing | SDC | MPW | 5-12-15 |



STANDARD CABLE LENGTH = 1m



H2W Technologies, Inc.
 Santa Clarita, CA 91350 USA
 Tel: (661) 291-1620
www.h2wtech.com

These drawings and specifications are the property of H2W Technologies, Inc. They are issued in confidence and shall not be reproduced, copied, or used without written permission from H2W Technologies, Inc.

UNLESS SPECIFIED OTHERWISE:
 All dimensions are in inches
 Standard Tolerances are as follows
 .XXX \pm .005 ANGLES \pm .1°
 .XX \pm .010 FILLETS .010
 .X \pm .020 CORNERS .010
 Remove All Burrs and Sharp Edges

**FOR
 REFERENCE
 ONLY**

MATERIAL

FINISH

TITLE

Ironless Motor Coil Model #:
BLDM-C02

DWG #

20-0215

REV

DATE

5-12-15

SHEET

1 of 3

1

2

3

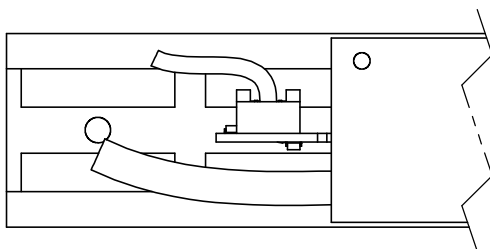
4

5

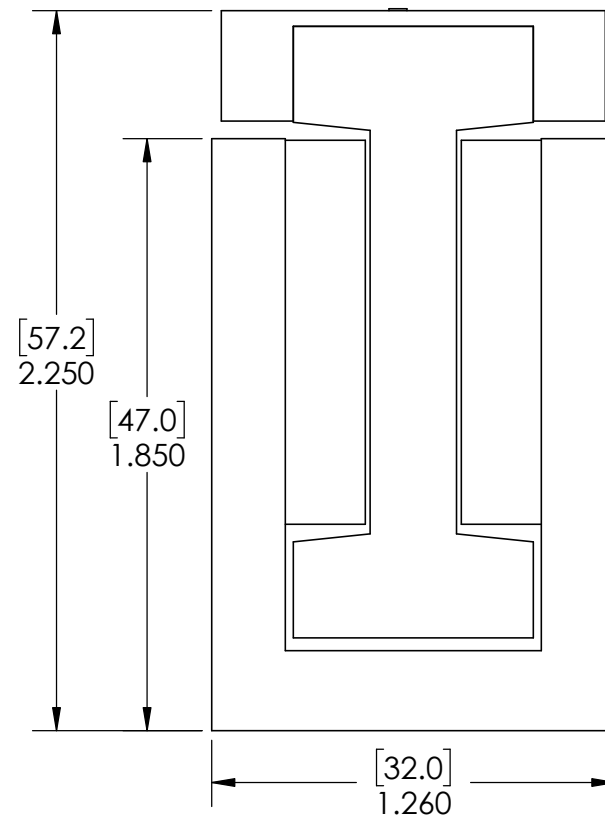
A

A

**OPTIONAL HALL MODULE MUST BE IN
MAGNET TRACK FOR COMMUTATION**



**MOTOR COIL SHOWN
WITH MAGNET TRACK**



B

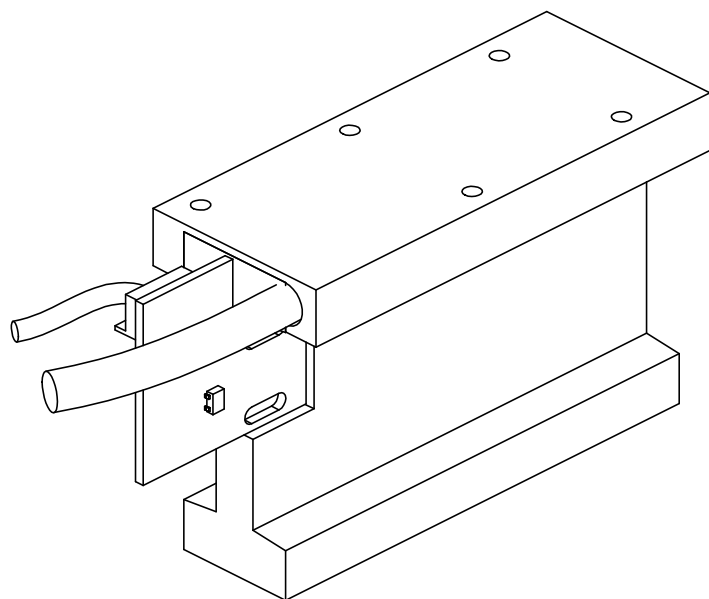
B

C

C

D

D



H2W Technologies, Inc.

Santa Clarita, CA 91350 USA
Tel: (661) 291-1620

www.h2wtech.com

These drawings and specifications are the property of H2W Technologies, Inc. They are issued in confidence and shall not be reproduced, copied, or used without written permission from H2W Technologies, Inc.

UNLESS SPECIFIED OTHERWISE:
All dimensions are in inches
Standard Tolerances are as follows
.XXX ±.005 ANGLES ±.1°
.XX ±.010 FILLETS .010
.X ±.020 CORNERS .010
Remove All Burrs and Sharp Edges

**FOR
REFERENCE
ONLY**

MATERIAL

FINISH

TITLE

Ironless Motor Coil Model #:

BLDM-C02

DWG #

20-0215

REV

DATE

5-12-15

SHEET

2 of 3

1

2

3

4

5

A

A

B

B

C

C

D

D

| Motor Specifications | | |
|--------------------------|--------------------|--------------|
| BLDM-C02 | | |
| General | | |
| Continuous Force | lbs [N] | 6.5 [29] |
| Continuous Current | Amps | 1.9 |
| Continuous Power | Watts | 24.8 |
| Peak Force @ 10% Duty | lbs [N] | 19.5 [86.8] |
| Peak Current @ 10% Duty | Amps | 5.7 |
| Peak Power @ 10% Duty | Watts | 223.2 |
| Electrical | | |
| Force Constant | lbs/Amp [N/Amp] | 3.4 [15.2] |
| Back EMF | V/in/sec [V/m/sec] | 0.39 [15.2] |
| Resistance | Ohms | 5.3 |
| Inductance | mH | 12.1 |
| Electrical Time Constant | msec | 1.3 |
| Km Motor Constant | lbs/sqW [N/sqW] | 1.49 [6.6] |
| Mechanical | | |
| Electrical Cycle Length | in [mm] | 2.4 [60.96] |
| Number of Poles | 2 | |
| Coil Assembly Length | | |
| with Hall Sensor | in [mm] | 3.65 [92.17] |
| without Hall Sensor | in [mm] | 2.9 [73.7] |
| Coil Assembly Weight | lbs [kg] | 0.39 [0.18] |
| Magnet Track Weight | lbs/in [kg/m] | 0.45 [8.05] |

| Wiring | |
|-----------------------|-------------------------------|
| Motor | |
| Phase A | White/Red Stripe |
| Phase B | White |
| Phase C | White/Black Stripe |
| Ground | White/Green Stripe |
| Thermostat 1 | Blue |
| Thermostat 2 | Orange |
| Hall Effect | |
| Hall A | White |
| Hall B | Red |
| Hall C | Black |
| Hall Ground | Green |
| Hall Power (+5-24VDC) | Brown, Orange, Violet, Yellow |



H2W Technologies, Inc.
Santa Clarita, CA 91350 USA
Tel: (661) 291-1620
www.h2wtech.com

These drawings and specifications are the property of H2W Technologies, Inc. They are issued in confidence and shall not be reproduced, copied, or used without written permission from H2W Technologies, Inc.

UNLESS SPECIFIED OTHERWISE:
All dimensions are in inches
Standard Tolerances are as follows
.XXX ±.005 ANGLES ±.1°
.XX ±.010 FILLETS .010
.X ±.020 CORNERS .010
Remove All Burrs and Sharp Edges

**FOR
REFERENCE
ONLY**

MATERIAL

FINISH

TITLE

Ironess Motor Coil Model #:
BLDM-C02

DWG #

20-0215

REV

DATE

5-21-15

SHEET

3 of 3