

REVISION TABLE					
REV	ECN#	DESCRIPTION	REV BY	APPROVED	DATE
---	---	Original Drawing	SDC	MPW	5-20-15

[20.0]
.787

[19.1]
.750

[43.0]
1.693

Optional Hall Module

8X TAP M6-1 ∇ .315 [8.0]
BOTH SIDES

1

2

3

4

5

A

B

C

D

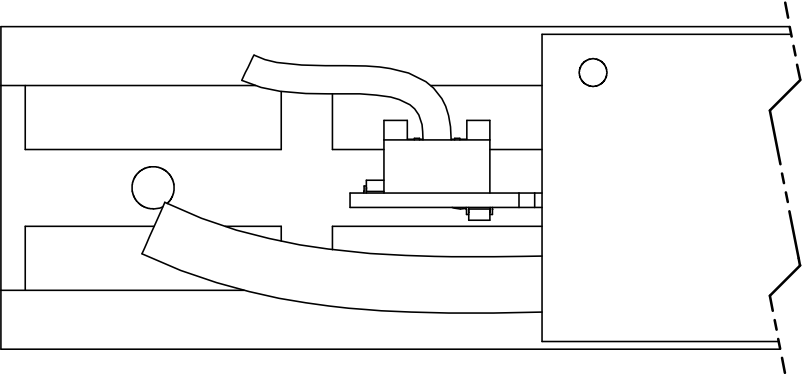
A

B

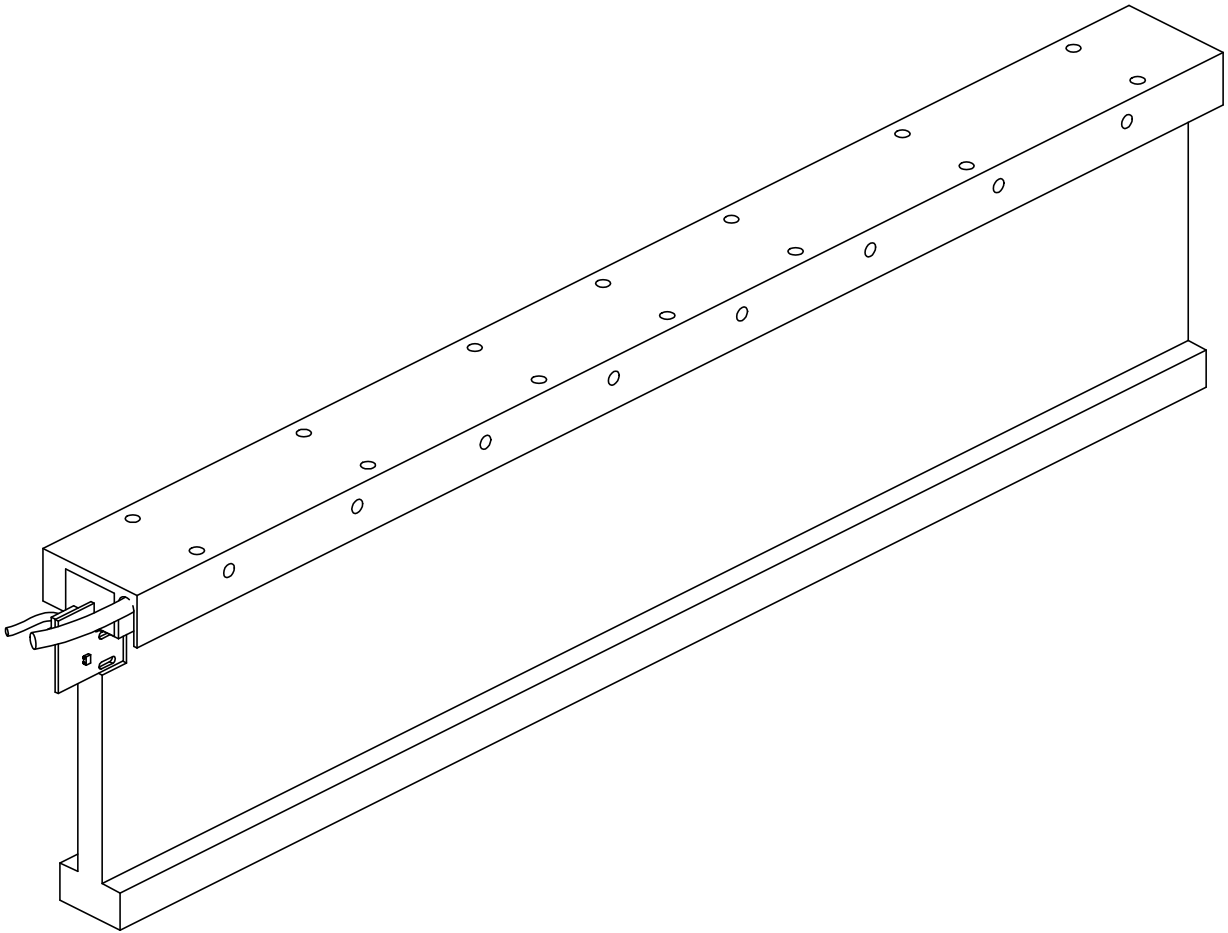
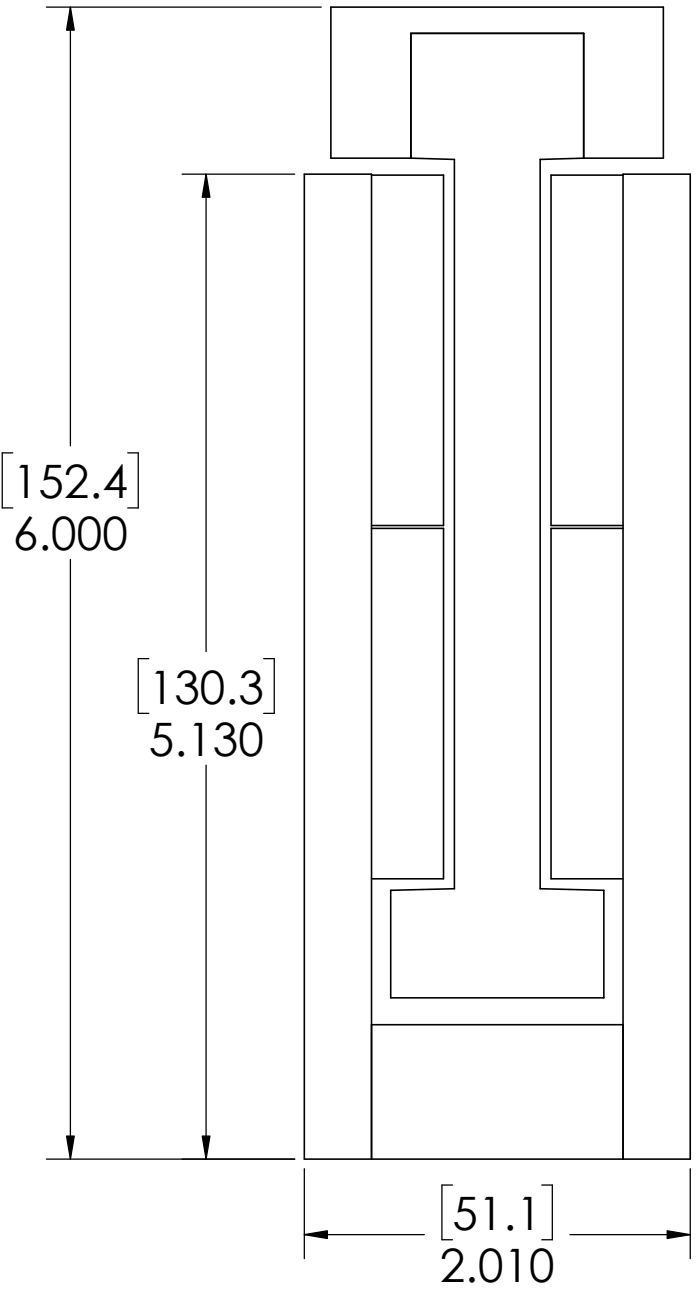
C

D

OPTIONAL HALL MODULE MUST BE IN
MAGNET TRACK FOR COMMUTATION



MOTOR COIL SHOWN
WITH MAGNET TRACK



1

2

3

4

5

A

B

C

D

Motor Specifications BLDM-F16		
General		
Continuous Force	lbs [N]	173 [771]
Continuous Current	Amps	5.2
Continuous Power	Watts	364
Peak Force @ 10% Duty	lbs [N]	517 [2300]
Peak Current @ 10% Duty	Amps	15.6
Peak Power @ 10% Duty	Watts	3276
Electrical		
Force Constant	lbs/Amp [N/Amp]	33.24 [148.0]
Back EMF	V/in/sec [V/m/sec]	3.76 [148.0]
Resistance	Ohms	10.4
Inductance	mH	13.4
Electrical Time Constant	msec	1.3
Km Motor Constant	lbs/sqW [N/sqW]	10.29 [45.8]
Mechanical		
Electrical Cycle Length	in [mm]	2.4 [60.96]
Number of Poles	16	
Coil Assembly Length		
with Hall Sensor	in [mm]	20.55 [522]
without Hall Sensor	in [mm]	20 [508]
Coil Assembly Weight	lbs [kg]	13 [5.91]
Magnet Track Weight	lbs/in [kg/m]	1.9 [0.034]

Wiring	
Motor	
Phase A	White/Red Stripe
Phase B	White
Phase C	White/Black Stripe
Ground	White/Green Stripe
Thermostat 1	Blue
Thermostat 2	Orange
Hall Effect	
Hall A	White
Hall B	Red
Hall C	Black
Hall Ground	Green
Hall Power (+5-24VDC)	Brown, Orange, Violet, Yellow