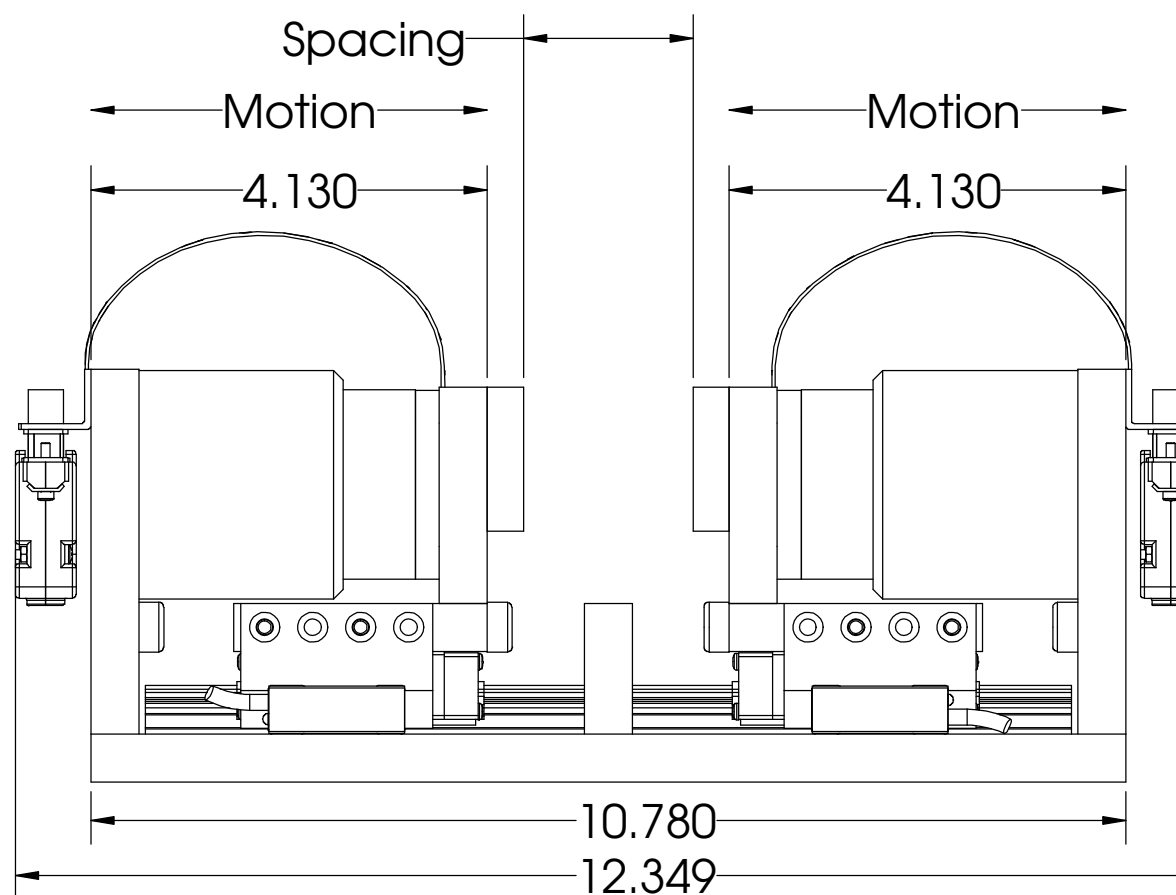
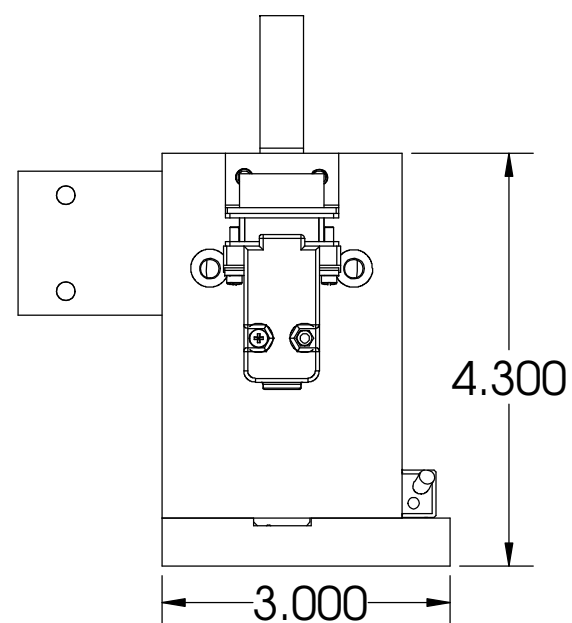
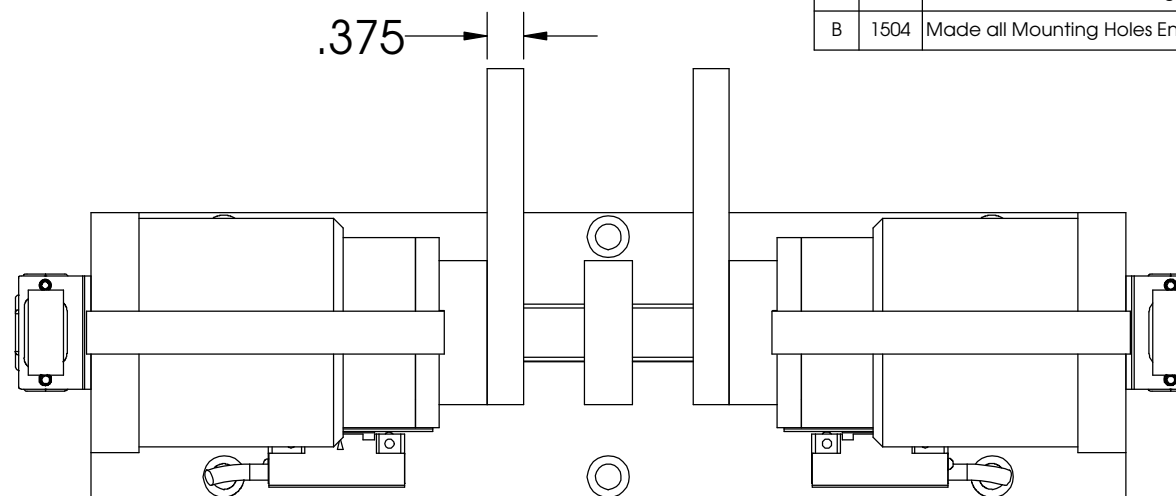


These drawings and specifications are the property of H2W Technologies, Inc. They are issued in confidence and shall not be reproduced, copied, or used without written permission from H2W Technologies, Inc.

REVISION TABLE					
REV	ECN#	DESCRIPTION	REV BY	APPROVED	DATE
---	---	Original Drawing	OOG	MPW	2-15-13
A	1503	Added Customer Mounting Plate	OOG	MPW	3-19-13
B	1504	Made all Mounting Holes English Sizes	OOG	MPW	3-19-13



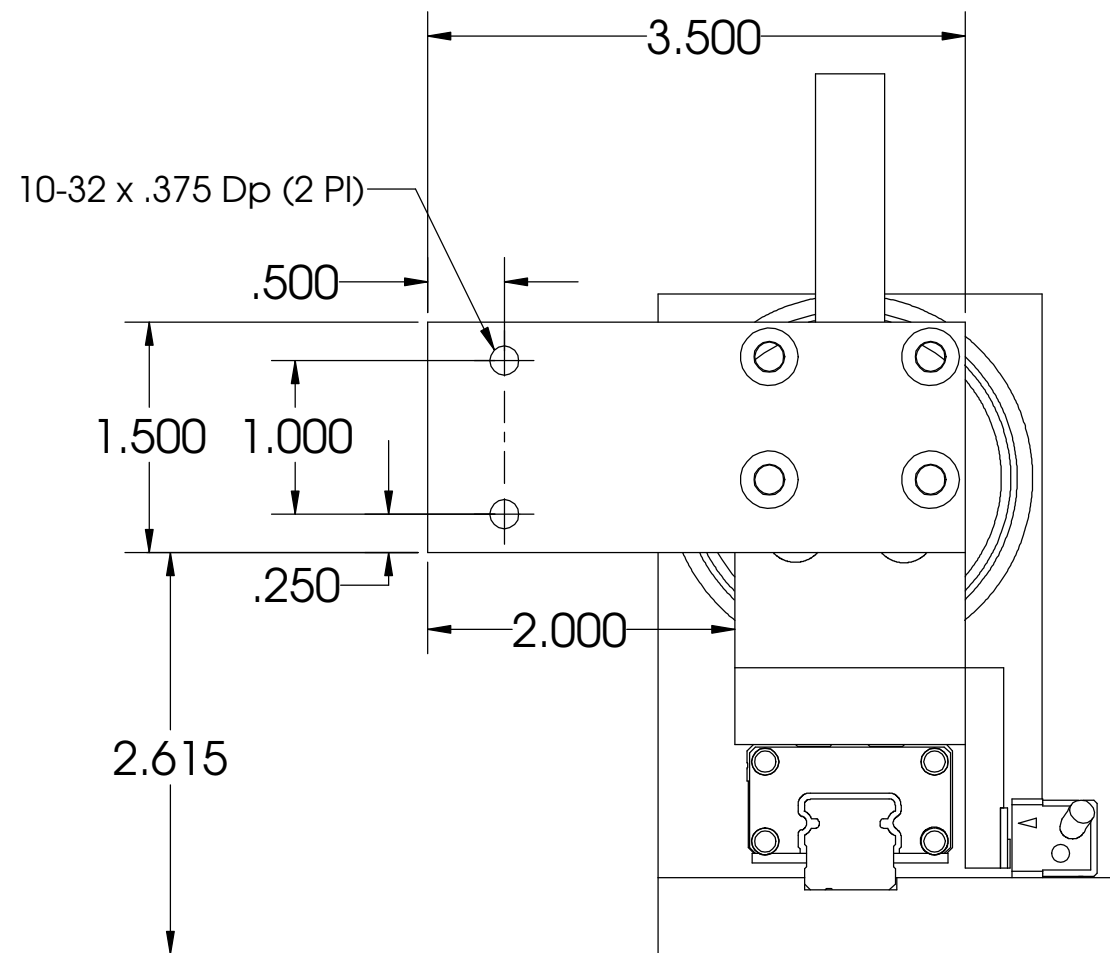
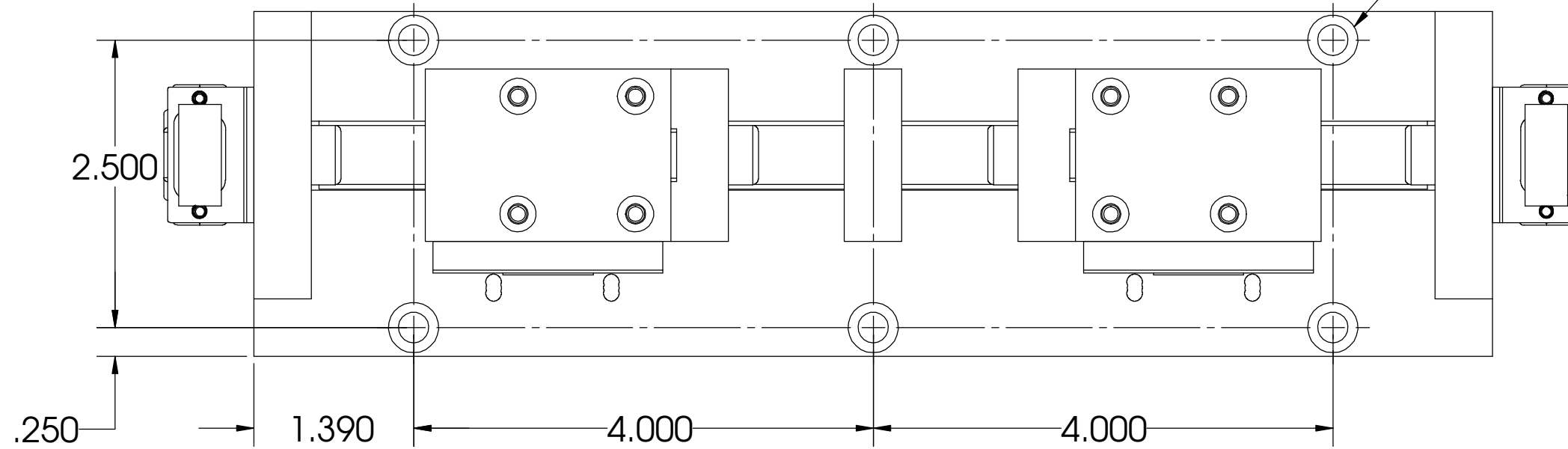
NOTE:
 - Motors shown at mid-stroke
 - Spacing
 Centered (Shown) = 1.77 in
 Fully Extended = 0.27 in
 Fully Retracted = 1.77 in

UNLESS SPECIFIED OTHERWISE: All dimensions are in inches Standard Tolerances are as follows .XXX ±.015 ANGLES ±1° .XX ±.010 FILLETS AND .X ±.020 CORNERS .010 Remove All Burrs and Sharp Edges				MATERIAL		TITLE	
FINISH				DRAWN		DWG#	
DATE		APPROVED		DATE		REV	
OOG		MPW		2-15-13		B	
H2W Technologies, Inc. 26470 Ruether Ave #102 Santa Clarita, CA 91350 USA Tel: (661) 251-2081 Fax: (661) 251-2067 www.h2wtech.com						Voice Coil Positioning Stage Model #: VCS15-050-LB-01-MC-2	
31-0603						1 of 3	

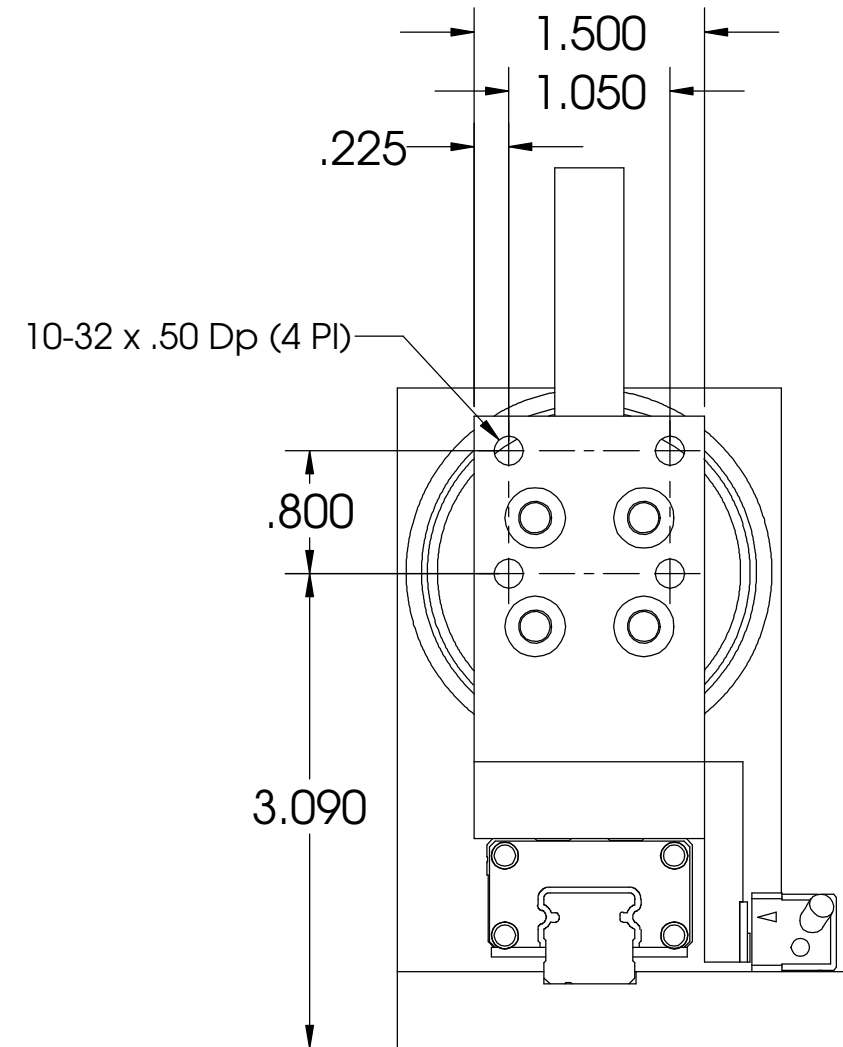
These drawings and specifications are the property of H2W Technologies, Inc. They are issued in confidence and shall not be reproduced, copied, or used without written permission from H2W Technologies, Inc.

MOTORS HAVE BEEN HIDDEN TO SHOW BASE MOUNTING HOLES

C'Bore for a 1/4 Screw (6 Pl)



ONE MOTOR HAS BEEN HIDDEN TO SHOW MOUNTING HOLES

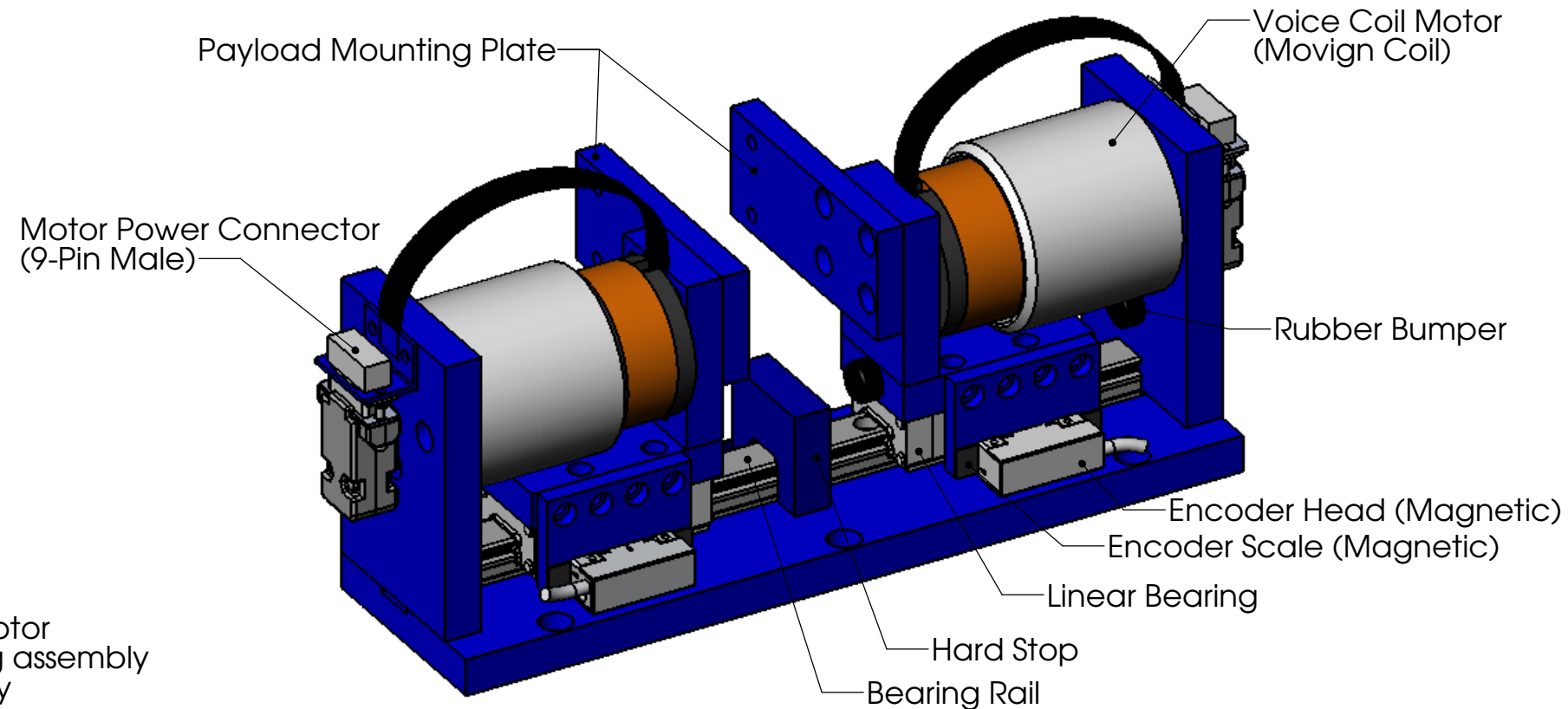


PAYLOAD PLATE HAS BEEN HIDDEN TO SHOW MOUNTING HOLES

TITLE		
Voice Coil Positioning Stage		
Model #:VCS15-050-LB-01-MC-2		
DWG#	REV	SHEET
31-0603	B	2 of 3

These drawings and specifications are the property of H2W Technologies, Inc. They are issued in confidence and shall not be reproduced, copied, or used without written permission from H2W Technologies, Inc.

VOICE COIL POSITIONING STAGE SPECIFICATIONS		
Motor P/N	NCC15-24-050-1R	
Stroke	1.50"	38.1 mm
Encoder Resolution	1 micron	
Bearing Type	Linear Bearing	
Moving Mass	1.7 lbs	772
Total Mass	9.60bs	4360 grams
Resistance @ 20C	1.9 ohms / 7.8 ohms	
Inductance @ 20C	1.4 mH / 5.8 mH	
Electrical Time Constant	0.74 msec	
Motor Constant	1.48 LBS/SQRT(Watt)	6.59 N/SQRT(Watt)
Force Constant	2.04 LBS/Amp or 4.13 LBS/Amp	9.08 N/Amp or 18.38 N/Amp
Back EMF	0.23 V/ips or .46 V/ips	9.08 V/m/sec or 18.38 V/m/sec
Continuous Force	8.4 LBS	37.4 N
Max Power @ 100% Duty	32 Watts	
Peak Force	25.2 LBS	112 N
Max Power @ 10% Duty	291 Watts	



NOTE:
 - Electrical specs are per individual motor
 - Moving mass is per individual moving assembly
 - Total mass is for entire stage assembly